

Drybase® Aquachannel System & Accessories

Product Description

Drybase® Aquachannel System is used in conjunction with Oldroyd® cavity drainage membrane systems and is installed at the wall-floor junction to provide a reliable and maintainable drainage system as part of an internal waterproofing solution for basements. It provides a clear space for water to flow through, connecting directly to a Safeguard® Sentry Sump and Pump System or drained via 50 mm End Outlets.

Available with an Upstand along the rear edge, when placed against the wall with a cavity membrane lining or as a Flat Top version (without upstand) for crossing a floor area or when offset from a retaining wall.

Benefits

- Manages water ingress
- Compatible with Safeguard® Sentry pump systems
- Tough durable design
- Quick and easy installation
- Comprehensive range of accessory components
- Allows for easy maintenance

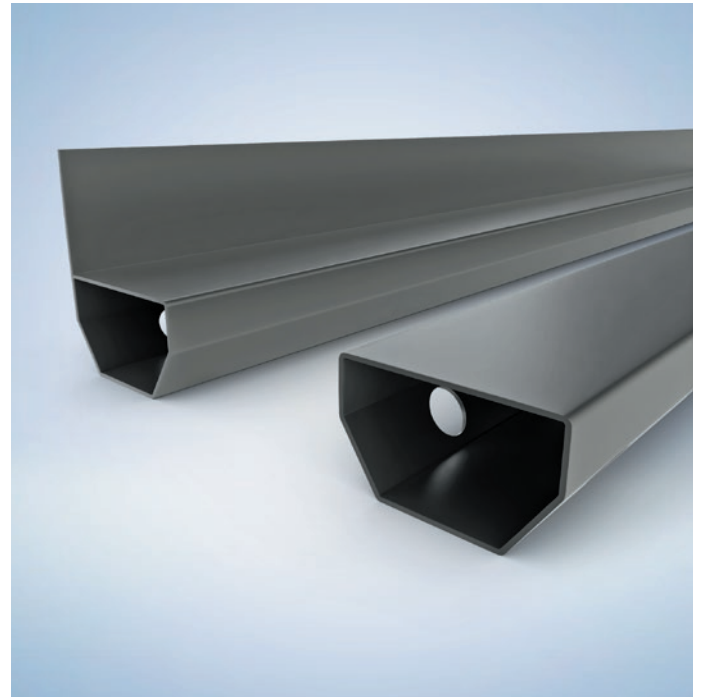
Properties

Appearance	Black
Dimensions	2 m (L) × 50 mm (D) × 80 mm (W)
Variants	<ul style="list-style-type: none"> • Flat top – no upstand (50 mm high) • Upstand (105 mm high, including upstand)
Features	19 mm drainage holes in the angled rear face

Application Information

Preparation

Drybase® Aquachannel System can be used in new-build structures below ground and basement refurbishment projects. It can be installed in a pre-formed recess in the ground-bearing slab or on top of it in conjunction with a layer (50 mm min) of



screed or XPS waterproof insulation. It can also be retained inside a bund sealed with Drybase® Tanking Slurry or Drybase® Liquid DPM

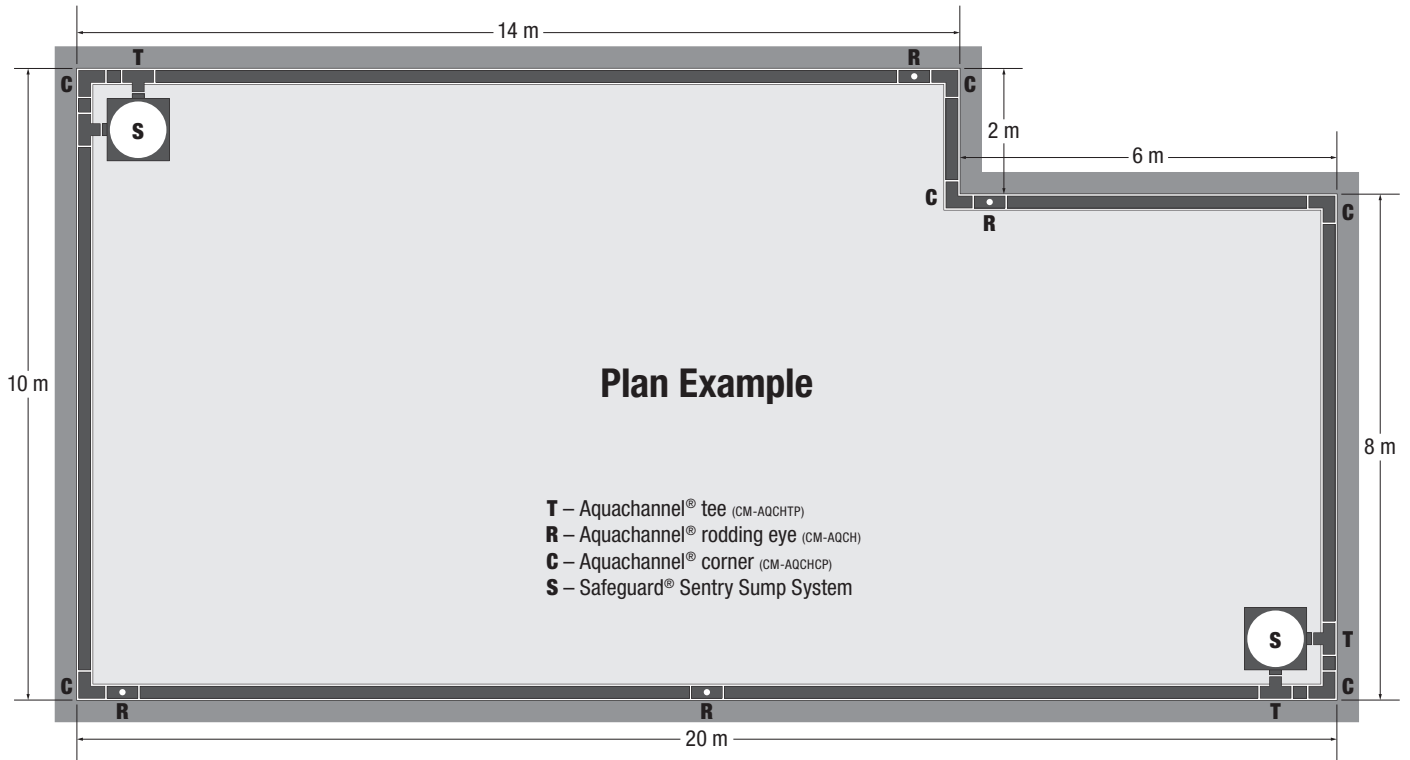
Drybase® Lime Inhibitor Concentrate or Drybase® Crystalline Active Slurry should be applied to concrete surfaces to control and minimise leaching and movement of 'free lime' (Calcium Hydroxide) which can create blockages within the drainage system.

Preparation

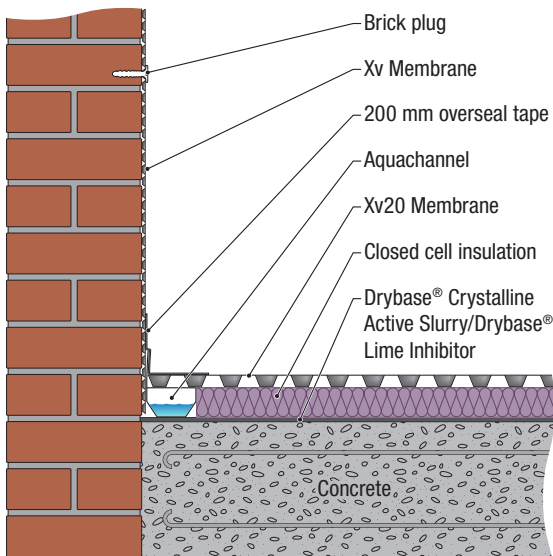
Installation with recess	100 mm wide × 60 mm deep recess/rebate as a minimum, formed or excavated level, no fall required. Pack with 20 mm clean gravel if the recess is larger eg cut out from an existing floor
On slab installation	50 mm (min) depth of conventional screed or closed cell, waterproof XPS insulation (min. compressive strength 300 kpa)
Connecting Aquachannel to Sump Chamber	Two required as a minimum. Maximum linear run of Aquachannel per Sump chamber is 50 m
Location of Rodding Eyes	Located near corners and no more than 10 m apart on straight runs

Drybase® Aquachannel System is used in conjunction with Oldroyd® cavity drain membranes and Sentry Sump Pump units to create Type C maintainable internal waterproofing systems suitable for basement refurbishment projects.

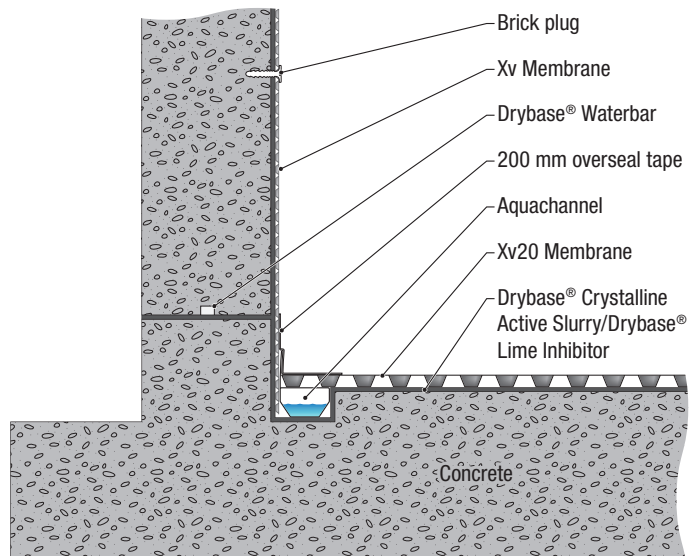
This system can be used in conjunction with Type A waterproofing products such as the Drybase® Tanking Range to produce combination waterproofing systems, reducing risk and consequences of failure as recommended in BS8102 -2022.



Basement Refurbishment



New Build Basement



Accessories

An easily assembled push fit drainage system, designed to be easily maintainable and to enable water to flow smoothly to the pump. No sealant required.

Accessory pieces are designed to be compatible with both versions of the **Drybase® Aquachannels** (with/without upstand).

Product	Description	Product code	Image
Drybase® Aquachannel Flatop	Dimensions (L × W × H): 2 m × 80 mm × 50 mm Provides low profile drainage to larger floor areas. Easily cut to length with a hacksaw or jigsaw.	CM-AQCHFT	
Drybase® Aquachannel Upstand	Dimensions (L × W × H): 2 m × 80 mm × 50 mm (105mm to the top of the upstand). Upstand retains wall membrane. Easily cut to length with a hacksaw or jigsaw.	CM-AQCHUS	
Drybase® Aquachannel Connector	Inline connector with couplers at either end to join lengths of channel.	CM-AQCHCN	
Drybase® Aquachannel Corner	90 degree fully swept bend with couplers at either end to connect to lengths of channel	CM-AQCHCP	
Drybase® Aquachannel Tee	Three way connection to lengths of channel to the sump chamber and pump as well as providing low profile drainage to larger floor areas when used with Aquachannel Flatop	CM-AQCHTP	
Drybase® Aquachannel Rodding Eye	120 mm long inline connected Rodding Eye A moulded spigot on the top enables connection to 50 mm solvent weld ABS waste pipe (not included) for easy inspection and maintenance of the Drybase® Aquachannel System.	CM-AQCH	
Drybase® Aquachannel 50 mm End Outlet	Connects to the Aquachannel and provides conversion to 50 mm solvent weld ABS waste pipe. Used with gravity drainage or as one of at least two connections to a sump chamber	CM-AQ CHANNEL OUTLETS	
Drybase® Aquachannel End Cap	Facilitates the termination of lengths of Drybase® Aquachannel	CM-AQCHEC	

Information given is in good faith based on experience and usage, however all recommendations are made without warranty or guarantee, since the conditions of use are beyond our control. All goods are sold in accordance with our Conditions of Sale, copies of which are available on request. Customers are advised that products, techniques and codes of practice are under constant review and changes occur without notice; please ensure you have the latest updated information.