

STORM DRY®

25 YEAR BBA APPROVED MASONRY PROTECTION



Stops rain penetration,
Saves energy,
Improves flood resistance

Stormdry® Masonry Protection Cream

When masonry gets wet, it gets cold... and cold walls mean cold buildings as heat escapes much more readily.

Protect your home from penetrating damp and increase the thermal efficiency of masonry with Stormdry® Cream.

With its unique colourless cream formula, a simple one-coat application will protect brick, stone and concrete from rain penetration for 20 – 30 years, whilst allowing the masonry to breathe and retain its original looks and features.

The Problem – Wet Masonry

When walls get wet, their thermal resistance tumbles and valuable heat escapes. They become less effective at keeping heat in.

The UK government has set a target of an 80% reduction in carbon emissions from buildings by 2050. (Climate Change Act, 2008). Even now, a third of Britain's housing stock has solid wall construction and this is predominantly single skin brick or stone. (English House Condition Survey, 2007).

These walls are difficult to insulate conventionally:

- Cavity wall insulation is not possible
- External insulation can be costly and unattractive
- Internal insulation can be impractical and takes up valuable floor space

So what can be done?



The Solution – Stormdry® Cream

Stormdry® Cream prevents rain penetration and is scientifically proven to reduce heat loss in single skin masonry construction, with an energy saving of up to 29%*. **All in one simple single coat application.**

*University of Portsmouth

www.stormdry.com

Visit the website for further information
and to watch the Stormdry® video

n55Plus



Protecting Against Rain Penetration

Stormdry® Cream will protect against water penetrating through the pores of bricks, mortar and stone. It will provide protection against rain penetrating through cracks in the masonry smaller than 0.3 mm. Larger cracks should be filled before application of Stormdry® Cream. Mortar in poor condition should be repointed using a suitable sand/lime or sand/cement mortar incorporating Stormdry® Repointing Additive.

Penetration depth

Stormdry® is able to penetrate more deeply into masonry than traditional liquid-applied masonry water repellents.

The increased penetration depth provides a number of benefits, including:

- Increased life expectancy – unlike thin coatings, the effectiveness of Stormdry® Cream will not be affected by the erosion of the masonry surface over time.
- Improved crack-bridging ability – because Stormdry® Cream penetrates deeply into masonry, it will penetrate beyond the depth of small cracks.



Stormdry® Masonry Protection Cream



Conventional Creams

Beading and Stormdry® gauge

As Stormdry® Cream is formulated to penetrate deeply into masonry it can take up to two months after application for a noticeable “beading effect” to appear when rainfall strikes the wall. However Stormdry® Cream is resistant to rain within a few hours.

After two or three years the “beading effect” will become less pronounced. However, Stormdry® Cream will keep on working for 20 – 30 years. This can be confirmed by using a Stormdry® gauge (pictured).



Prepare masonry

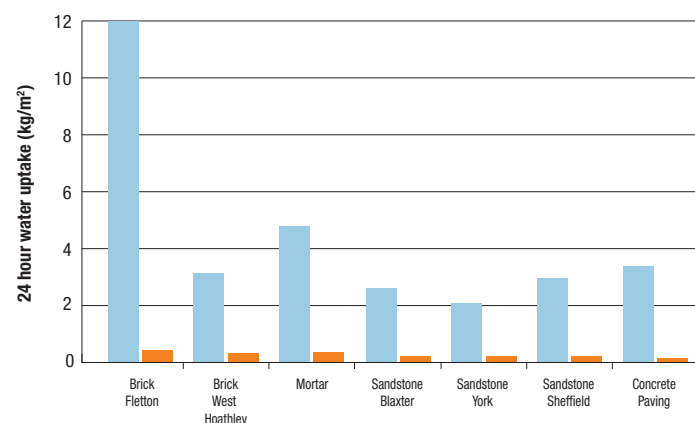


Stormdry® is supplied ready for use

Effectiveness

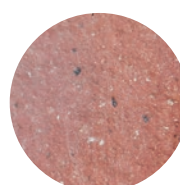
Stormdry® Cream has been tested to BS EN ISO15148:2002 (E), demonstrating its effectiveness on concrete, mortar, brick and sandstone.

Masonry Protection on Different Substrates

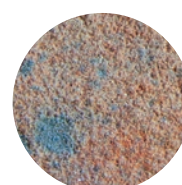


Untreated Stormdry®

Stormdry® is not suitable for use on limestone, please call our technical department for further advice on treating limestone.



Brick Fletton



Brick West Hoathley



Mortar



Sandstone Blaxter



Sandstone York



Sandstone Sheffield



Concrete Paving

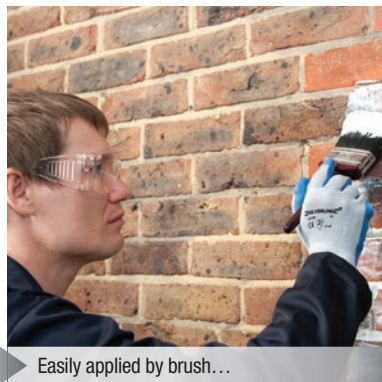
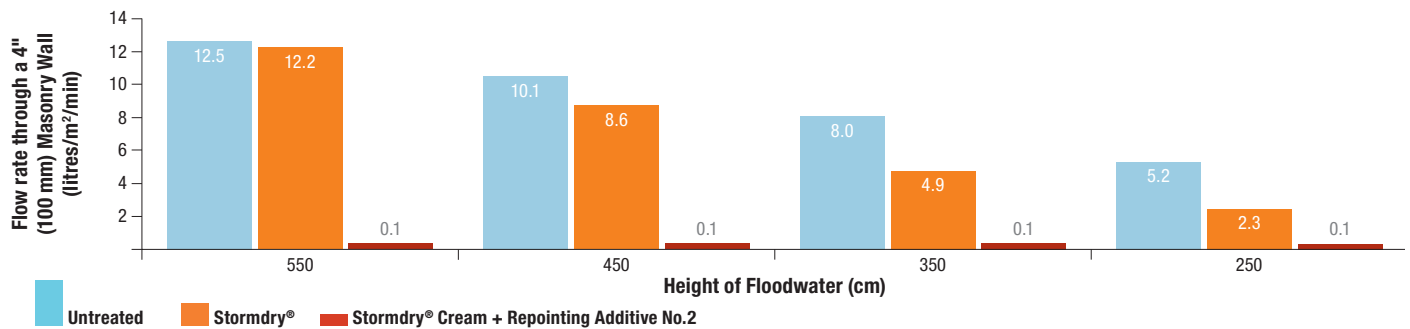


Improving Flood Resistance of Masonry

The Stormdry® Cream system can provide an effective flood barrier as part of a flood resilience or flood protection system. Before application of Stormdry® Cream, cracks in walls to be treated should be repaired and mortar courses repointed up to the flood design height using a suitable mortar mix incorporating Stormdry® Repointing Additive No.2.

Due to its high vapour permeability, Stormdry® Cream allows walls to dry out more quickly after flooding occurs than if they had been treated with conventional coatings. With no visual alteration to the existing brick or stonework finish and one simple application, Stormdry® Cream creates an invisible flood barrier with the minimum of disruption.

The reduction in waterflow through a wall after treatment with Stormdry® Masonry Cream and Repointing Additive



Easily applied by brush...



...or by roller



Treated wall immediately after application



Cures to original appearance

Improving the Thermal Performance of Masonry

Permeable construction materials such as brick, stone, concrete, and mortar are worse insulators when they are wet; much in the same way as wet clothes feel cold.

Testwork carried out by the University of Portsmouth has shown that the treatment of brickwork with Stormdry® Cream reduces conductive heat loss by a factor of two. Tests on a model house treated with Stormdry® Cream show a 29 % reduction in heating energy.

The energy and carbon savings made possible by Stormdry® Cream have now been independently verified in a study carried out by Giraffe Innovation environmental consultants. A copy of the report is available at www.stormdry.com.

All the laboratory tests, independent reports and field test data has been reviewed by the Energy Saving Trust and they have verified that a treatment of Stormdry® inhibits the absorption of moisture and reduces heat loss through masonry walls.



Up to 35 % of all heat loss on a building can occur through single skin walls.

Photo courtesy of iRed Ltd



Independent energy savings report from Giraffe Innovation.



Rigorous review of laboratory tests, independent reports and field test data has resulted in energy saving claims in relation to Stormdry® Masonry Protection Cream being verified by the Energy Saving Trust.



For a free sample tube call us on 01403 210204

Stormdry® Cream is a colourless*, breathable, water-repellent treatment for brick, concrete, and stone walls. It is supplied in the form of a deeply penetrating 'cream' that is applied to the wall surface in a single coat using a roller or brush. Once Stormdry® Cream has been applied it will permeate deeply into the masonry before curing to form a water-repellent barrier.

Typical applications for Stormdry® Cream include:

- Protection against penetrating damp
- Improving thermal resistance of masonry by keeping it dry (energy saving)
- Maintaining thermal properties of cavity wall insulation
- Improving flood resistance of masonry

Stormdry® Cream is based on carefully selected silanes and siloxanes which line the pores of the masonry to form a water-repellent silicone matrix. Because it works by lining the pores rather than blocking them, the masonry is allowed to breathe, and does not suffer from an increased risk of frost damage (spalling). Due to its novel formulation and deep penetration, Stormdry® Cream is highly resistant to UV light and other forms of degradation, resulting in a life expectancy of more than 25 years. Stormdry® Cream should only be applied to dry, porous surfaces. It should not be applied over sealed or painted surfaces and is intended for above-ground use only.

* Application of Stormdry® may cause very slight darkening to some substrates. Although this will usually fade over time, a small, representative and inconspicuous test area should always be treated before full treatment begins. Free sample tubes of Stormdry® are available upon request.

Benefits of Stormdry® Cream

- Easy to apply
- Provides water and rain repellency
- Reduces heat loss through masonry walls (verified the Energy Saving Trust)
- Single-coat application – saves time
- Easy to estimate quantity of product required – each litre treats 5 m²
- Tested to BS EN ISO 15148:2002 on a wide range of substrates – including bricks, mortars, concrete, and sandstone
- UV resistant – BBA approved 25 year life expectancy
- Does not block pores – allows substrate to 'breathe naturally'
- Deeply penetrating – improves the effectiveness of the treatment by bridging small cracks and extends the life of the treatment
- Alkali resistant – can be applied over freshly pointed walls
- Manufactured in the UK under an ISO9001/14001 quality and environmental management system

STORM DRY®
MASONRY PROTECTION CREAM

Stormdry® Masonry Protection Cream

- 25 Year BBA Approved Masonry Protection
- Verified by the Energy Saving Trust as an energy saving method
- 25 m² coverage (per 5 litre pack)
- Single coat application by brush, roller, powered roller or air spray
- Can be used on brick, stone and concrete
- Deeply penetrating
- Allows masonry to breathe naturally



STORM DRY®

Safeguard Europe Ltd., Redkilyn Close,
Horsham, West Sussex.
United Kingdom. RH13 5QL.

T 01403 210204 F 01403 217529
E info@safeguardeurope.com

www.safeguardeurope.com/stormdry

