

Product Guide

**Damp-Proofing
& Timber Treatment**



DRYROD®

THE ULTIMATE RISING DAMP TREATMENT

Dryrod® Eradicates Damp

Dryrod® Damp-Proofing Rods are patented, 12 mm diameter grooved rods that carry a powerful water-repellent material. The rods are inserted into pre-drilled 12 mm holes along the mortar lines of a building. The water-repellent they carry diffuses deeply into the damp masonry, curing to form a highly effective barrier to damp. This forms a damp-proof course which stops further rising damp from occurring and helps the wall to dry out.

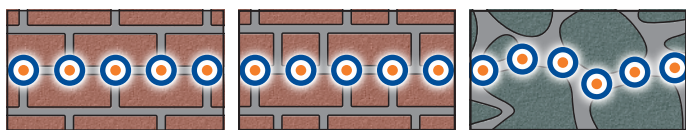
Tests have shown that **Dryrod®** has much better diffusion characteristics than conventional damp-proofing products. **Dryrod®** has many advantages over conventional damp treatments:

- Deep penetration and proven spread gives a complete treatment every time
- Exact dose in each hole
- Easy application
- Superior performance

100% ACTIVE INGREDIENT
PATENTED TECHNOLOGY



Recommended Drilling Patterns



Stretcher Bond

Flemish Bond

Irregular Stone



1 Drill Holes

Drill holes into the first mortar course at least 150 mm above exterior ground level, at 120 mm spacings along the wall.



2 Insert Rods

Clear the drill holes of dust and insert the **Dryrod® Damp-Proofing Rods** into the holes one at a time.



3 Leave to Work

Ensure the rods are recessed by about 5 mm. They will diffuse water-repellent material, forming a new damp-proof course.





DRYZONE[®]

DAMP-PROOFING CREAM



Targeted Treatment for Rising Damp

The patented **Dryzone[®] Damp-Proofing Cream** has revolutionised the treatment of Rising Damp. The **Dryzone[®] Cream** is introduced by means of a simple applicator gun into a series of holes drilled into the mortar course. Once the cream is installed, it diffuses through the mortar course before curing to form a water-repellent resin.

Dryzone[®] Cream has many advantages over conventional chemical injection systems:

- **High strength formulation – does not introduce large volumes of liquid carrier into the wall**
- **Does not require an electric DPC pump – can be used in situations where power is not available**
- **Internationally tested by:**



1 Drill Holes

Drill holes into the first mortar course at least 150 mm above exterior ground level, at 120 mm spacings along the wall.



2 Inject Cream

Fully insert the nozzle. Inject **Dryzone[®] Cream** while withdrawing at a steady rate. Stop injecting just before removing.



3 Leave to Work

The cream will diffuse water-repellent material into the wall, forming a new damp-proof course.





DRYZONE®

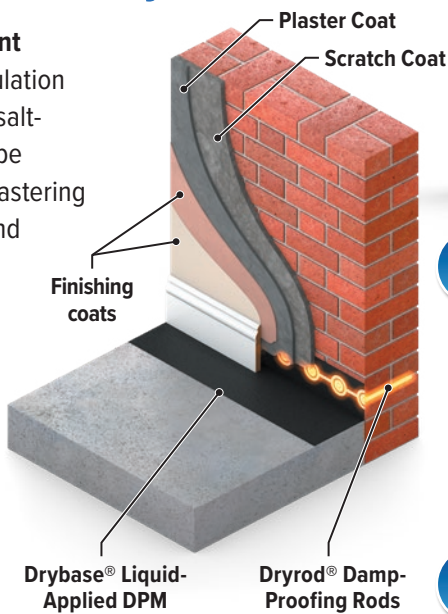
RENOVATION PLASTERS

Ready Mixed – Ready to Go!

Dryzone® Damp-Resistant Plaster is a modern formulation of breathable damp- and salt-resistant plaster that can be applied with traditional plastering techniques. Unlike the sand and cement renders that are often used, **Dryzone® Renovation Plasters** are non-destructive to the underlying masonry, do not require gauging and present a warm surface.

For older buildings, **Dryzone® Hi-Lime Renovation Plaster** is also available. The plaster blend which contains a high proportion of natural hydraulic lime and calcite is highly breathable, quick drying and suitable for heritage applications. **Dryzone® Renovation Plasters** have many benefits:

- Breathable
- Salt-resistant
- Non-destructive to underlying masonry
- Hi-lime suitable for older buildings



1 Scratch Coat

After mixing, apply a rough/scratch coat, directly to the surface, about 5 to 10 mm thickness.



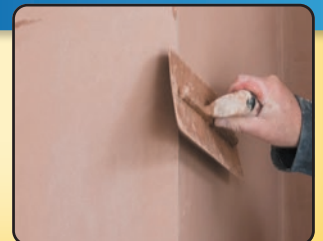
2 Plaster Coat

After a few hours apply the plaster coat with a thickness of 10 to 15 mm. More coats can be added if necessary.



3 Finishing Coat

A skim coat can be applied after 24 hours of drying time. Other finishes should be applied after 14 days.





DRYZONE®

EXPRESS REPLASTERING SYSTEM

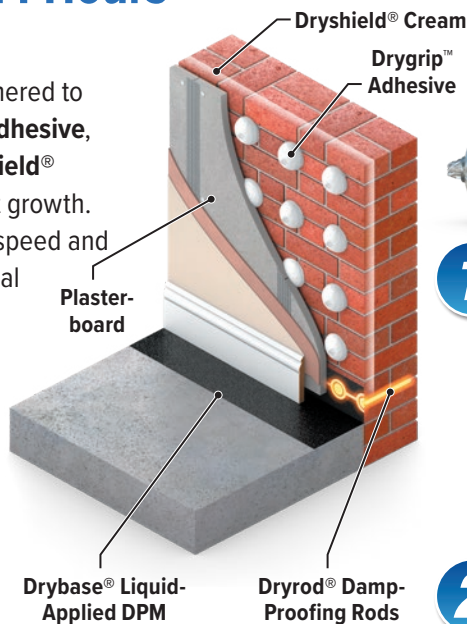
Replaster in 24 Hours

This specification utilises plasterboard, which is adhered to the wall using **Drygrip™ Adhesive**, in conjunction with **Dryshield® Cream**, which inhibits salt growth. This system provides the speed and convenience of a traditional dot-and-dab plasterboard application and also provides a salt and damp-proof interior wall surface.

It is possible to complete the replastering process from start to finish within 24 hours, making this specification ideal for situations where occupants wish to re-occupy the room as soon as possible.

The system is quicker and consequently less expensive to install per m² than traditional “wet” plaster systems. **Dryzone® Replastering System** has many benefits:

- Fast – complete replastering in 24 hours
- Inhibits salt growth
- Traditional dot-and-dab application
- Less expensive per square metre



1 Apply the Cream

Once any loose material has been resolved from the wall, apply the **Dryshield® Cream** with a brush or roller.



2 Fix Plasterboard

Use the **Drygrip™ Adhesive** and **Dryzone® System Positioning Plugs** to fix the plasterboard onto the wall.



3 Finish the Job

Apply the final skim coat using a suitable skim plaster. The job can be completed and ready within 24 hours.



DRYBASE

LIQUID-APPLIED DPM

Drybase® is a Paint-on DPM

A ready-to-use liquid-applied damp-proof membrane. The easy application is carried out in two coats, with a brush or roller. Once applied, it cures to form a flexible and elastic damp-proof membrane.

It is ideal for use on damp floors and walls, before the application of floor and wall coverings. It can also be used to isolate embedded timber joists or to act as a barrier to ground gases. Its excellent adhesive qualities also make it suitable as an adhesive primer.

Drybase® Liquid-Applied DPM has many advantages:

- Damp-proof barriers for floors and walls
- Single component, easy-to-use
- Can act as a barrier to gases and vapours
- Applicable to a wide range of materials
- Quick drying time



1 Preparation

Brush the surface to remove dust and loose materials. Also ensure that the surfaces are dry. Stir the liquid well.



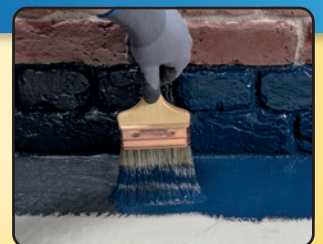
2 First Coat

Apply the first coat by brush or roller, moving in one plane, back and forth. Allow the first coat to become touch dry.



3 Second Coat

Apply the second coat within 24 hours of the first coat. This coat must be at right angles to the first coat to eliminate pin-holing.



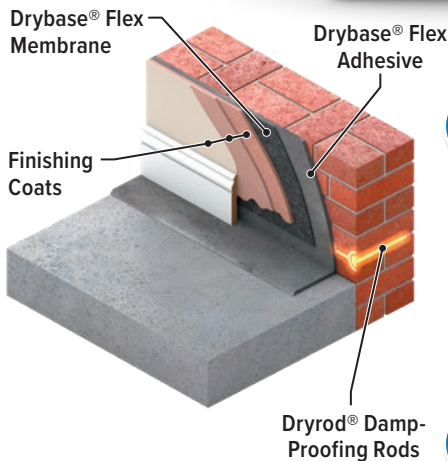
DRYBASE®

FLEX MEMBRANE SYSTEM



Replaster Damp Walls Fast!

Drybase® Flex Membrane is a watertight low-profile sheet membrane for protection against dampness in walls without the need to drill and install plugs. The membrane is a 1.5 mm thick flexible polypropylene sheet with a fleeced surface on both sides. The two fleeces ensure good adhesion to the wall by means of **Drybase® Flex Adhesive**, as well as the direct application of plaster to the face.



Drybase® Flex Adhesive is a polymer modified cement-based product used to fix Drybase® Flex Membrane to walls. It is supplied in powder form ready to be mixed with water, and applied using a suitable trowel. **Drybase® Flex Membrane** has many benefits:

- Fast – complete replastering in under 12 hours
- Low profile – matching in with existing plaster
- Apply plaster finishing coat immediately
- No need for drilling or wall plugs

1 Apply Adhesive

Once any damp issues have been resolved, mix and apply the adhesive to the wall using a notched trowel.



2 Apply Membrane

Offer the membrane up to the adhesive, using a smooth trowel to apply gentle pressure from the centre outwards.



3 Replaster

After curing overnight, surface finishes can be applied, such as gypsum based plaster, prior to a skim finish.



STORM DRY®

MASONRY PROTECTION CREAM

Protection From Penetrating Damp

Stormdry® Masonry Protection Cream is a colourless and breathable water-repellent treatment for brick, stone, render and concrete walls. **Stormdry® Cream** stops penetrating damp without changing the appearance of a wall. It is supplied in the form of a deeply penetrating cream that is applied to the wall surface using a roller or brush. Once applied, it will permeate deeply before curing to form a water-repellent barrier that is effective for a BBA approved 25 years.



Deeper penetration means more protection



HAIRLINE CRACKS ARE PROTECTED, PREVENTING WATER SEEPING INTO THE INTERIOR

Shallow penetration means less protection



HAIRLINE CRACKS ARE UNPROTECTED, ALLOWING WATER TO SEEP INTO THE INTERIOR

- Wall retains the original appearance
- Single coat application
- Retains wall breathability
- BBA approved for 25 years
- UKCA and CE Marked



1 Preparation

Remove any material, such as loose mortar or dust, using a masonry brush. Use a biocide to remove moss etc.



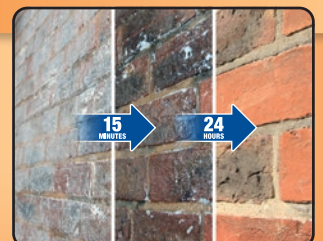
2 Apply

Stormdry® Cream can be applied with a brush, roller or airless sprayer depending on the surface area to be covered.



3 Penetrate

The cream appears white immediately after treatment, but the masonry will return to its original appearance after 48 hours.



Roxil[®] 100

WOOD & PATIO CLEANER

Prepare and Clean

Roxil[®] 100 Wood & Patio Cleaner is a liquid based biocidal cleaner designed to remove green algae from exterior surfaces such as decking, fencing, sheds and patios. Applying the cleaner prior to washing the surface will ease the removal of dirt from the surface. It can be used as part of a maintenance regime in conjunction with Roxil[®] Patio Cream and Roxil[®] Wood Protection Cream.

- Kills and loosens biological growth
- Effective on paving, wood and patios
- Non-destructive cleaning method

Roxil[®] 100 Wood & Patio Cleaner works well with Roxil[®] Wood Scrub Gel to provide a deeper clean. Roxil[®] Wood Scrub Gel is a clear gel-based cleaner used to clean and revive weathered softwood. It helps remove grey discoloration and revives the colour of timber. The gel formulation ensures easy and accurate application. Roxil[®] Wood Scrub Gel can be applied with brush or roller. It is suitable for horizontal and vertical outdoor wood surfaces such as wooden decking or garden furniture.



1 Prepare

Ensure rain is not forecast for the next 24 hours. Brush away any loose material with a stiff brush.



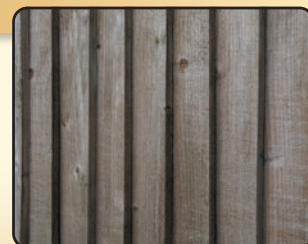
2 Apply

Brush, roller or spray the cleaner onto the surface and leave for at least 1 hour. For best results leave for 24 hours.



3 Clean

Use the stiff brush, in combination with water, to scrub the grime away. Give the surface a final wash down with water.



ROXIL® WP

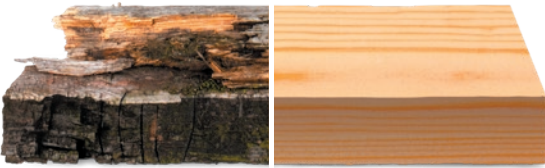
WOOD PRESERVER

Preserve for Longer

Roxil® Wood Preserver is a liquid wood preservative that penetrates deeply into softwoods and defends against mould/algae growth, rot, fungal attack and woodworm infestation. If left unprotected from the elements, wood risks deterioration from a multitude of sources. Their absorbent nature allows for moisture penetration which can lead to degrading appearances and structural instability.

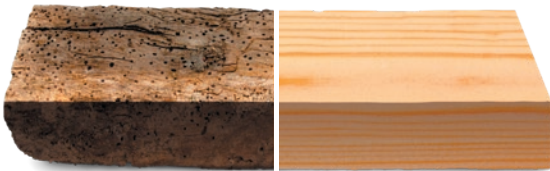
ROT AND FUNGAL ATTACK

PREVENT ROT AND FUNGAL ATTACK IN WOOD AND ARREST PROGRESS OF EXISTING CASES



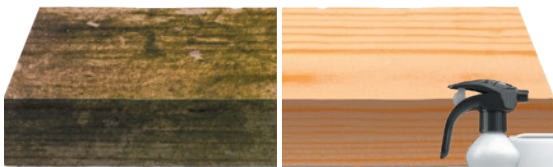
WOODWORM INFESTATION

PENETRATES WOOD TO KILL ANY EXISTING WOODWORM LARVAE AND PREVENT FUTURE INFESTATIONS



MOULD AND ALGAE GROWTH

REDUCES MOULD AND ALGAE GROWTH WHEN COMBINED WITH A REGULAR CLEANING SCHEDULE



- Protects against mould, rot and fungal attack
- Eliminates woodworm
- Odourless formula



ALSO LOOK FOR OUR RANGE OF COLOURED WOOD PRESERVERS – AVAILABLE IN 7 COLOURS



1 Prepare

Brush away any loose material. If there is existing biological growth, wash with **Roxil® 100 Wood & Patio Cleaner**.



2 Decant

Pour the solvent-free formula into a suitable container, being sure not to spill onto plants, paintwork, glass etc.



3 Apply

Apply 2 – 3 coats directly to the surface and allow to dry for at least 24 hours before any overcoat is applied.



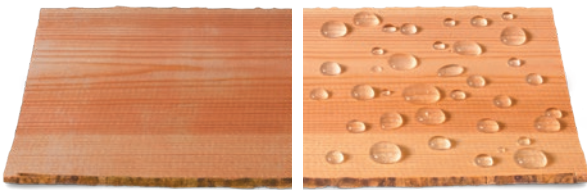
ROXIL®

WOOD PROTECTION CREAM

Protect from the Elements

Roxil® Wood Protection Cream is a silicone cream emulsion that weatherproofs the surface of softwoods and weathered hardwoods from the effects of moisture such as degradation, warping and mould or algae growth. With regular cleaning, a single application of the colourless formula, to outdoor wooden structures, provides long-lasting⁽¹⁾ protection from the harmful effects of moisture.

LONG-LASTING PROTECTION FOR SOFTWOODS AND WEATHERED HARDWOODS



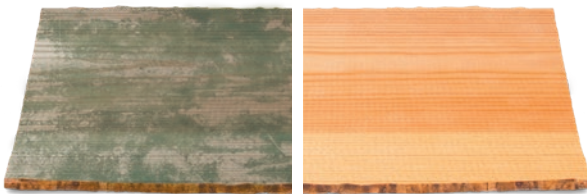
REDUCED WARPING

REDUCED WATER INGRESS WHICH LEADS TO EXPANSION AND WARPING



REDUCED ALGAE & MOULD

WHEN COMBINED WITH A REGULAR CLEANING SCHEDULE



- Single-coat, colourless formula
- Protects wood from moisture
- Reduced mould and algae growth

⁽¹⁾ Based on accelerated QUV aging and good maintenance



1 Prepare

Brush away any loose material – some sanding may be necessary. Wash the surface with **Roxil® 100 Wood & Patio Cleaner**.



2 Apply

A single coat of **Roxil® Wood Protection Cream** can be applied with a brush or roller, in good weather conditions.



3 Maintain

The cream will soak into the wood – protecting it. A regular cleaning cycle will enhance the service life of the cream.



STORM DRY®

DRYZONE

DRYBASE®

ROXIL®

NOPE!

 **SoluGuard®**

RAINCHECK®

ProBor®

BRICK-FIX