

# Damp-proofing and Waterproofing



## Product Guide

Welcome to Safeguard's Product Guide. Safeguard have been suppliers of specialist damp-proofing and waterproofing products for over 30 years.

Our focus is on providing high-quality, reliable products to specialist contractors in the construction industry.

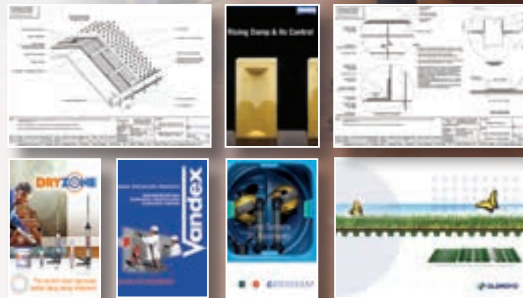
### Technical Support

At Safeguard we realise the importance of providing first-rate technical support for our product range. Our technical team can be contacted during office hours on **01403 210204** and are happy to discuss projects of any size. Over 200 technical documents can be viewed or downloaded from our website:

[www.safeguardeurope.com](http://www.safeguardeurope.com)

including:

- CAD details
- NBS clauses
- Product datasheets
- Application guidelines
- Product videos
- Case studies



### Easy Ordering

#### Builder's Merchants

Core products in our range are stocked by specialist builder's merchants. For details of stockists in your area call **01403 210204**.



#### By Phone

Call our sales office on **01403 210204**. Our business hours are 8:30am until 5:15pm, Monday to Friday. We can accept payment by major credit/debit cards. Various delivery options are available, including a "next working day" courier service. Goods ordered before 2:30pm will usually be despatched the same day provided that they are in stock.



# DRYZONE SYSTEM



- Dryrod® and Dryzone® DPC
- Dryzone® Renovation Plasters
- Dryzone® Express Replastering
- Dryzone® Mould Resistant Paint

**ASK ABOUT OUR TRAINING COURSES – 01403 210204**

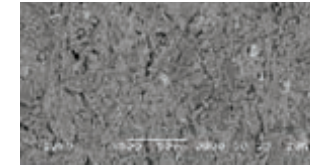


## The Complete Rising Damp Renovation Range

### What is Rising Damp?

Rising damp occurs when groundwater rises up through walls, floors and masonry. Bricks and mortar can be very porous and contain many fine capillaries, through which water can rise. This can result in **visible damp patches**, **salt-contamination** and **crumbling plaster** on interior walls.

Most modern properties are built with a damp-proof course, commonly referred to as a DPC. Some properties, however, were built with no damp-proof course, or the original has failed, meaning that rising damp can occur and it is necessary to make remedial repairs.



Electron microscope image showing pores in a brick.

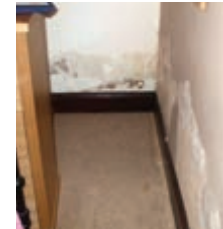


Rising Damp

### What are the effects of Rising Damp?

**Decorative Spoiling** – Moisture and ground salts introduced by rising damp can cause wallpaper to peel, plaster to deteriorate, and paint to blister.

**Health Effects** – It has been widely documented that excessive dampness in buildings can have negative effects on the health of the building's occupants.

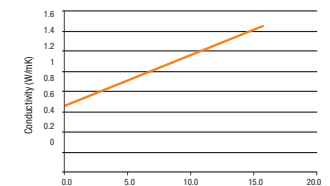


**Erosion of the Building Fabric** – Ground salts introduced into the wall by rising damp can attack and dissolve the binders in brick, stone, and mortar causing them to lose their strength and structural integrity. Crystallising salts can exert such forces that the mortar, brick, or stone microstructure is destroyed.

**Increased Heat Loss** – Dampness in porous building materials causes a reduction of insulation properties as air in the pores is replaced by more conductive water. For example, the thermal conductivity of a wet brick has been found to be approximately twice that of a dry brick (see Figure 2).

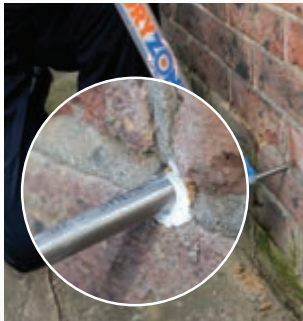


Relationship between conductivity and brick moisture (Portsmouth University)



## Dryzone® Damp-Proofing Cream

This is a patented high-strength silicone based cream that is injected into holes drilled at regular intervals along a mortar course. Once injected, the cream diffuses along the mortar course before curing to form a breathable water-repellent resin – preventing dampness from rising up the wall.



- The original damp-proofing cream
- High performance formula
- No specialist tools required



## Dryrod® Damp-Proofing Rods

These patented 12 mm diameter fibre rods carry a powerful water-repellent material. They are simply inserted into holes drilled at regular intervals along a mortar course. Once inserted, the rods diffuse their water-repellent material along the mortar course, curing to form an effective barrier to rising damp.



- Most effective rising damp treatment available
- Delivers the correct dose every time
- No spillages or mess to clean up



## Dryzone® Renovation Plasters

It is important to use an appropriate plaster when renovating walls that have been affected by damp issues, especially in cases of rising damp where hygroscopic salts are still likely to be present after treatment.

Standard gypsum plasters soak up residual moisture left in the wall. Any salts in the wall migrate to the surface and can break down the plaster structure, requiring further repairs.

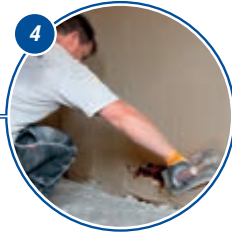
Dryzone® Renovation Plasters have been developed specifically for replastering internal walls that have been treated for rising damp or penetrating damp problems.



**Install Damp-Proof Course**  
Install the new damp-proof course using either Dryzone® Damp-Proofing Cream or Dryrod® Damp-Proofing Rods.



**Apply Scratch Coat**  
Apply a rough coat of at least 5 mm thickness. This will act as an anchoring layer.



**Apply the Plaster Coat**  
Once the rough coat has become firm, apply the plaster again with a thickness of at least 15 – 20 mm.

**Finish the job**  
Apply the final skim coat using a suitable gypsum-based skim plaster.



**Prepare the Wall**  
remove damp/salt contaminated plaster.



## Dryzone® Express Replastering System

This specification utilises plasterboard, which is adhered to the wall using a special damp and salt resistant adhesive in conjunction with a paintable salt inhibiting primer cream. This system provides the speed and convenience advantages of a traditional dot and dab plasterboard application and also provides a salt and damp-proof interior wall surface.

It is possible, with the use of dry-jointing techniques, to complete the replastering process from start to finish within 24 hours, making this specification ideal for situations where occupants/tenants need to re-enter the room as soon as possible.



**Install Damp-Proof Course**  
Install the new damp-proof course using either Dryzone® Damp-Proofing Cream or Dryrod® Damp-Proofing Rods.



**Apply Dryshield**  
The cream acts as a primer for the adhesive – maximising bond strength to the masonry substrate.



**Fix the Plasterboard**  
Use the adhesive and positioning plugs to fix the plasterboard on the wall.

**Finish the job**  
Apply the final skim coat using a suitable gypsum-based skim plaster.



**Prepare the Wall**  
Remove damp/salt contaminated plaster.



# DRYBASE

## Flex Replastering Membrane



Drybase® Flex Membrane is a highly durable and flexible fleeced plaster membrane that is designed for direct application to walls that have been affected by dampness and salt contamination. The fleece-lined membrane can be quickly and easily applied to walls using the specially formulated Drybase® Flex Adhesive. It can be plastered onto directly using standard plasters, creating a versatile solution to the problem of damp walls, when it's not possible to stop damp at its source.

### Drybase® Flex Membrane

A watertight low-profile sheet membrane for protection against dampness in walls without the need to drill and install plugs. The membrane is a 1.5 mm thick flexible polypropylene sheet with a fleeced surface on both sides, ensuring good adhesion to the wall by means of Drybase® Flex Adhesive, as well as the direct application of plaster to the face.

### Drybase® Flex Adhesive

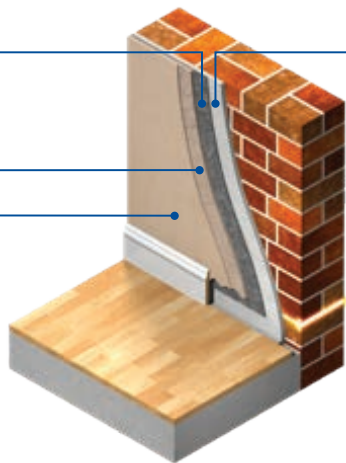
Drybase® Flex Adhesive is a polymer modified cement-based product used to fix Drybase® Flex Membrane to walls. It is supplied in powder form ready to be mixed with water, and applied using a suitable trowel.

Drybase® Flex Membrane

Drybase® Flex Adhesive

Bonding coat

Skim coat



1

#### Clean the surface

Before Drybase® Flex Adhesive can be applied, repair structural defects and clean the surface of the substrate to ensure maximum bonding of adhesive.



2

#### Mixing

Mix with a mechanical mixer until smooth, with a of ratio 1 part water to 3.5 parts Drybase® Flex Adhesive by weight (for 10 kg bags, add 2.9 litres of water).



3

#### Apply Drybase® Adhesive

Spread the Drybase® Flex Adhesive with a suitable trowel over the face of the wall to cover approximately 1 m<sup>2</sup> at a time. The preferred adhesive thickness is 1 – 2 mm.



4

#### Drybase® Membrane application

Offer the Drybase® Flex Membrane up to the adhesive on the wall and use a trowel to apply gentle pressure spreading from the centre outwards.



5

#### Trimming and finishing

Remove any excess adhesive with a damp cloth before it sets and trim any excess membrane with an appropriate cutting tool.



6

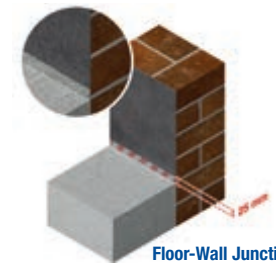
#### Plastering

After the adhesive has cured overnight, surface finishes can be applied such as bonding plaster or hardwall plaster prior to a skim finish.

### Drybase® Flex Detailing



Overlapping Joints



Floor-Wall Junction



Corners



Windows



Doors



Drybase® application to wall

Laying a wooden floor over Drybase® DPM

Drybase® used on floor

## Drybase® Liquid-Applied DPM

Drybase® liquid applied DPM is a liquid polymer based barrier coating that can be used to resist the penetration of gases, vapours, water and other liquids.

The recipe is based on a blend of polymers which provide integrity, elasticity and toughness to the formed film. Drybase® is applied in two coats by brush, roller or airless spray. One 5 litre tub will cover up to 4 m<sup>2</sup>, depending upon the substrate surface texture.

### Benefits

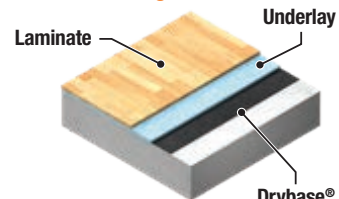
- Single pack system
- Waterbased and solvent-free
- Quick drying
- Good bond to many substrates
- Low vapour permeability
- Damp proof barrier
- Gas barrier

### Applications

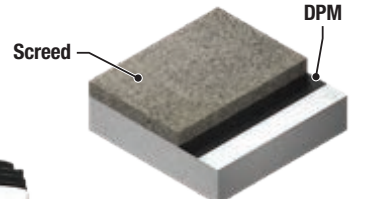
- Gas barrier for carbon dioxide, methane and radon
- Damp proof barrier
- Primer before replastering to stop salt attack
- Flood resilience and mitigation
- Timber applications – sunken posts, beams set into a wall, isolation of timber element to protect against rot etc
- Wet rooms
- Bunds
- Reglet joint



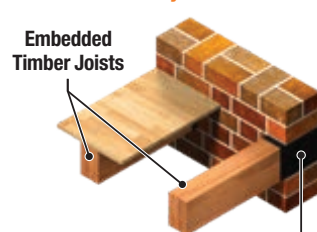
### Laminate flooring



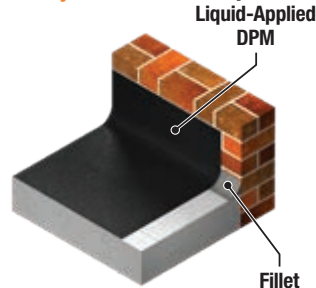
### Screed flooring



### Embedded timber joists



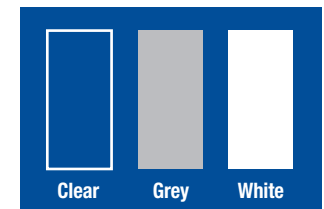
### Floor-wall junction



## Drybase® ECS Epoxy Floor Coating

Drybase® ECS Epoxy Floor Coating is a two-part epoxy resin floor coating suitable for use on damp floors. The two parts are mixed thoroughly before use with a mechanical mixer. Once mixed, Drybase® ECS Epoxy Floor Coating can be applied by brush or lambs wool roller to provide a decorative coating which is easily cleaned. Areas of application include:

- Treating damp problems in solid concrete floors
- Floor and wall coating for kitchens and other food-processing areas
- Warehouse and storage areas
- Light industrial factory areas to give resistance to foot and light vehicular traffic



## Dryzone® Mould Resistant Paint

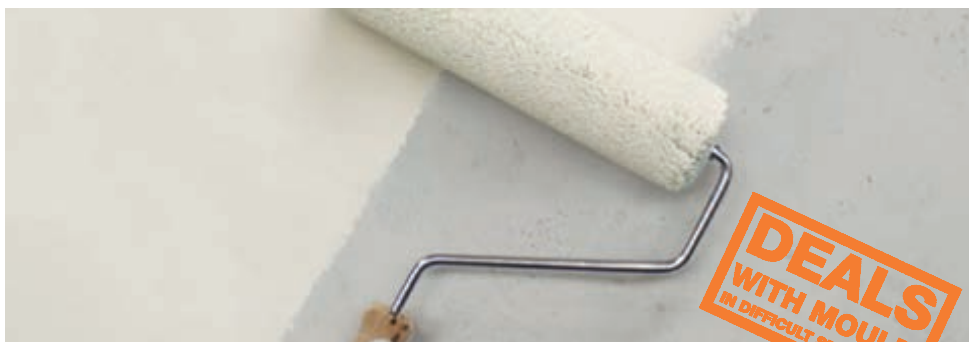
Dryzone® Mould Resistant Paint is a premium-quality mould resistant paint for protecting against the growth of unsightly black mould on walls and ceilings – even where there is persistent condensation.

Condensation and the black mould growth typically associated with it can be very difficult to solve. In situations where it is not possible to improve heating or ventilation, such as a bathroom in a mid-terrace property with no windows, Dryzone® Mould Resistant Paint can help.

A combination of modern paint technology and advanced paint-film protection provides property owners with a powerful and cost-effective way to combat mould growth.

### Product Benefits

- Effective life time of 5 years, preventing the re-occurrence of black mould
- Quick drying with no over-painting problems
- Only requires standard paint tools – clean and then paint
- Ideal for use after cleaning mouldy walls with Soluguard Multi-Surface Biocide



# ultratherm®

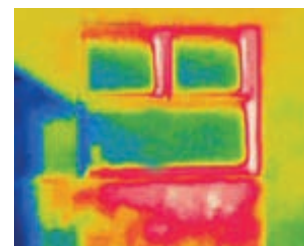
## Improve Insulation and Combat Condensation

Ultratherm is an internal insulation system for solid walls. Its ability to increase the thermal resistance of walls can help to stop condensation and the associated mould growth.

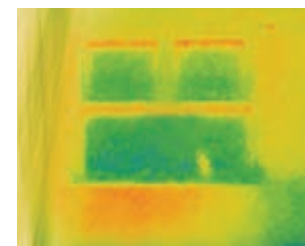
Although only 12 mm thick, Ultratherm typically improves the thermal resistance of solid brick walls by 40%, creating a more comfortable living environment, reducing energy bills and reducing mould growth risk.

Ultratherm can be combined with the use of both Dryzone® Mould-Resistant Paint and Stormdry® Masonry Protection Cream for increased protection.

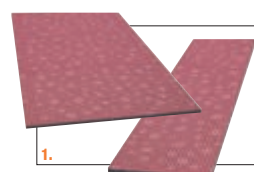
With an expected service life in excess of 25 years, Ultratherm offers a long-term and practical solution to condensation issues and increased energy efficiency.



Heat loss through an un-insulated solid wall



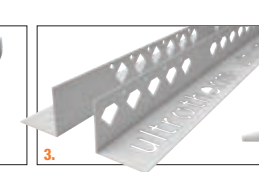
The same wall following application of Ultratherm



1.



2.



3.



4.



5.

1. Ultratherm 12 mm tile & Ultratherm 8 mm reveal tile for window and doors
2. Ultratherm adhesive
3. Ultratherm plastic angle beads for use around all external angles
4. Ultratherm detail adhesive 300 ml
5. Ultratherm insulated plastic trim beads for use around window and door frames to reduce cold bridging

## Product Benefits

- Inhibits black mould growth and reduces heating bills by increasing the wall surface temperature and reducing condensation
- Ultratherm is installed over existing plaster and retains the character of your property
- Flexible tiles allow even the most awkward shapes and curves to be insulated
- Can be plastered using various base coat plasters
- Insulated trim beads are used against door and window frames to reduce the problem of cold bridging
- Ultratherm can also be installed with or without removing skirting boards and decorative covering
- Ultratherm has undertaken stringent fire testing at the BRE and has been awarded Class 0 fire rating



## Stormdry® Masonry Protection Cream

With its unique colourless cream formula, Stormdry® is a simple one-coat application and will protect brick, stone and concrete from rain penetration for a BBA approved 25 years, whilst allowing the masonry to breathe and retain its original appearance.

When walls get wet, their thermal resistance falls and valuable heat escapes. They become less effective at keeping heat in.

Even now, a third of Britain's housing stock has solid wall construction and this is predominantly single skin brick or stone. (English House Condition Survey, 2007).

These walls are difficult to insulate conventionally:

- **Cavity wall insulation is not possible**
- **External insulation can be costly and unattractive**
- **Internal insulation can be impractical and takes up valuable floor space**

Stormdry® prevents rain penetration and is scientifically proven to reduce heat loss in single skin masonry construction, and is verified by the Energy Saving Trust. All-in-one, simple, single-coat application.

**5% VAT**  
for energy saving applications\*



Orders and Technical Support – 01403 210204

- ✓ One coat, easy to apply
- ✓ Waterproofs masonry
- ✓ Deeply penetrating formula
- ✓ 25 years protection
- ✓ BBA Approved



**Improving thermal performance**  
Permeable construction materials are worse insulators when they are wet; much in the same way as wet clothes feel cold.

Testwork carried out by the University of Portsmouth has shown that the treatment of brickwork with Stormdry® reduces conductive heat loss by a factor of two.

### Improving flood resistance of masonry

The Stormdry® system can provide an effective flood barrier as part of a flood resilience or flood protection system. Before application of Stormdry®, cracks in walls to be treated should be repaired and mortar courses repointed up to the flood design height using a suitable mortar mix incorporating Stormdry® Repointing Additive No.2.



**FREE SAMPLE AVAILABLE**

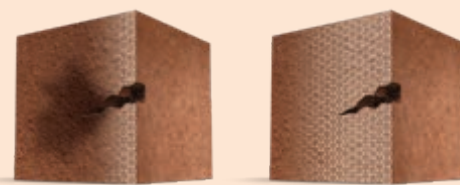


VIDEO – Visit [www.stormdry.com](http://www.stormdry.com) to view our Stormdry® video or call 01403 210204 to request a copy.



### Protecting against rain penetration

Stormdry® will protect against water penetrating through the pores of bricks, mortar and stone. It will provide protection against rain penetrating through cracks in the masonry smaller than 0.3 mm. Larger cracks should be filled before application of Stormdry®. Mortar in poor condition should be repointed using a suitable sand/lime or sand/cement mortar incorporating Stormdry® Repointing Additive.



Conventional coatings      Stormdry®

Stormdry® is not suitable for use on limestone, please call our technical department for further advice on treating limestone

### Stormdry® has been tested on a wide range of substrates



Product Information – [www.safeguardeurope.com](http://www.safeguardeurope.com)

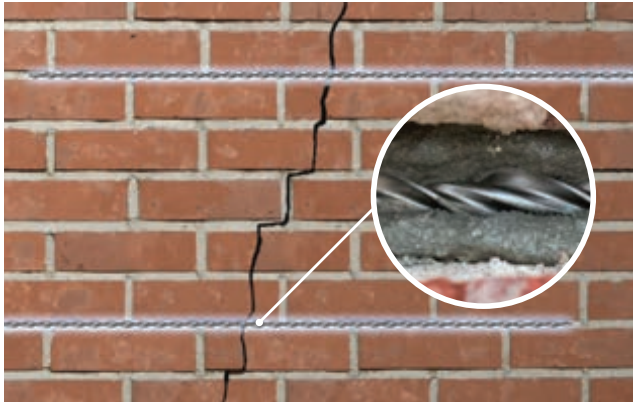
\*Stormdry® qualifies for 5% VAT when used for energy saving purposes on wall insulation applications. The rate applies for both installation and product costs, for all residential properties and buildings used solely for a charitable purpose.

### Brickfix Crack Repair System

The Brickfix Crack Stitching System offers a fast and cost-effective solution for crack repair in masonry walls.

The system allows cracks in masonry to be stabilised by bonding Brickfix helical crack stitching bar into slots cut into the wall's mortar course using specially formulated Brickfix grouts.

It should be noted that this method of crack repair can only stabilise the symptoms of cracked masonry walls. It will not cure the cause of the crack (e.g. subsidence). For this reason it is recommended that a structural engineer is consulted before undertaking crack repairs.



### Brickfix Crack Repair Kit

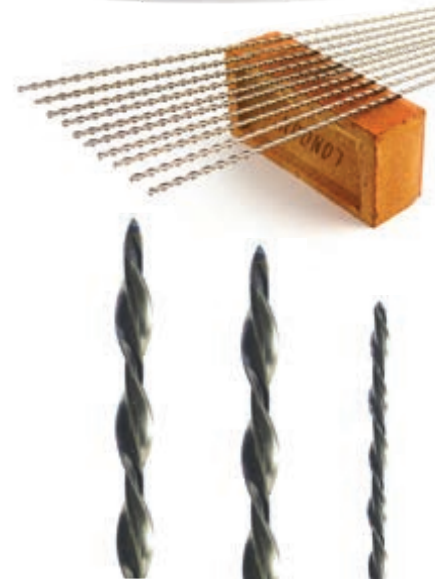
Suitable for brick, block, and stone walls.

#### System Components:

- CE marked BrickFix 6 mm diameter helical crack stitching bars
- CE marked BrickFix Grout
- Application tools

#### Advantages

- CE marked stainless steel bar and grout
- Non-disruptive repair method
- Absorbs further localised stress
- Minimises likelihood of further cracking
- Eliminates the need to rebuild a wall
- Permanent repair
- A fast, cost effective and economical solution



### BrickFix CE1 Grout 28NT

BrickFix CE1 Grout is a high performance, non-shrink grout formulated for fixing BrickFix Helical Bar into masonry – e.g. for masonry crack repairs. It is non-gassing and is suitable for application using a BrickFix Applicator Gun and fills all voids into which it is injected. It develops compressive strength rapidly and is suitable for bonding metal components into most common masonry substrates.



### BrickFix Helical Bar

BrickFix Helical Bar is a stainless-steel helical bar suitable for a wide range of construction applications including masonry crack repair and masonry reinforcement. It is manufactured from 304 grade stainless steel bar material (316 available upon request), and is available in standard lengths of 1 m, 3 m and 10 m. Standard diameters are 6 mm and 8 mm, however other diameters between 4.5 and 10 mm can be supplied on request. It is usually used in conjunction with BrickFix CE1 Grout.



### BrickFix DriveTie Wall Ties

BrickFix DriveTie helical wall ties provide a simple and fast method of installing wall ties into existing cavity walls – e.g. where the original wall ties have corroded or were installed incorrectly.

They are manufactured from 304 grade stainless steel bar (316 grade available on request) and are driven into masonry using a special drill attachment.

BrickFix DriveTie helical wall ties are available in various lengths to accommodate different cavity widths.



# Vandex®



## Cementitious waterproofing products

Vandex have a reputation for the uncompromising quality of their cementitious waterproofing products. These are particularly suitable for basement, tunnel and lift pit waterproofing, the waterproofing of underground car parks, swimming pool and reservoir waterproofing and repair, sewer and manhole refurbishment, and repairs to concrete and the waterproofing and sealing of construction and expansion joints.

Established in 1946 by a Danish chemist, Vandex products are now used worldwide and have been used on numerous prestigious projects including The Channel Tunnel, Canary Wharf, and The World Bank.

## Vandex Concrete Repair System

The Vandex CRS Concrete Repair System provides a systematic procedure for concrete repair. The system consists primarily of cementitious materials which are homogeneous with concrete (strength, modulus of elasticity, thermal movement).

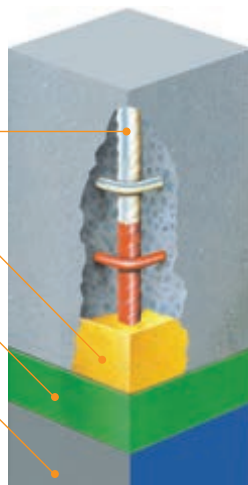


Vandex Corrosion Protection M

Vandex CRS Repair Mortar 05

Vandex CRS Levelling Compound LC

Vandex Cemelast



**'SIMPLE, EFFECTIVE CONCRETE REPAIR'**

### Vandex Corrosion Protection M

Anti-corrosion coating for rebars.



### Vandex CRS Repair Mortar 05

Versatile concrete repair mortar with excellent workability.



### Vandex CRS Levelling Compound LC

Used for surface levelling over concrete repairs made using Vandex Repair Mortars.



### Vandex Cemelast

Polymer additive mixed with Vandex BB75 to provide a waterproof anti-carbonation coating.



**VIDEO – A video explaining the application of the Vandex Concrete Repair System can be viewed on the Safeguard website, [www.safeguardeurope.com](http://www.safeguardeurope.com)**



UVDB Registration No: 056147



**'HIGH PERFORMANCE TANKING SLURRY FOR USE ON CONCRETE, RENDER, AND MASONRY – APPLIED BY TROWEL OR MECHANICAL SPRAY'**

## Vandex BB75

Vandex BB75 is a high-performance tanking slurry suitable for use on concrete, render, and masonry. Once cured, Vandex BB75 is able to withstand pressures of up to 7-bar when applied to suitable concrete surfaces. Areas of application include:

- Basement/cellar waterproofing
- Underground car parks
- Retaining walls
- Lift pits
- Water tanks/reservoirs/water treatment works
- Sewer/sewage treatment plant waterproofing (BB75Z)
- Fish ponds & water features

Vandex BB75 is suitable for application by trowel or mechanical spray.



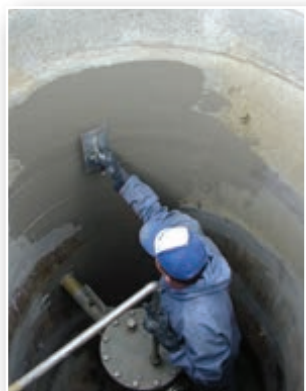
## Vandex BB75 E

Vandex BB75 E is an elasticised waterproofing slurry formed by mixing Vandex BB75 Grey (dry component) with Vandex PK75 (liquid acrylic polymer). The polymer provides elasticity and enhanced crack-bridging properties to the waterproof coating. Areas of application include:

- Wall-floor junctions in basement conversion projects
- Surface waterproofing (on internal or external walls)
- Areas experiencing cracking (e.g. construction joints)
- Areas where cracks and small deformations can occur (e.g. in tunnels and shafts)



**'THE POLYMER PROVIDES ELASTICITY AND ENHANCED CRACK-BRIDGING PROPERTIES TO THE WATERPROOF COATING'**



1. Before applying VANDEX BB 75 E, the entire surface must be prepared using high pressure water jet, or sandblasting.
2. VANDEX BB 75 E is applied in two coats.
3. Slurry mortar guns (such as PUTZMEISTER Sprayboy with 8 mm nozzle) are suitable for the application of VANDEX BB 75 E.
4. VANDEX BB 75 E can also be applied by trowel.

## Vandex Unimortar 1

Vandex Unimortar 1 is a versatile waterproofing and repair mortar for horizontal and vertical surfaces.

Vandex Unimortar 1 is often used to create fillets (e.g. wall-floor junction detail) or as a repair mortar. However it can also be used as a waterproofing slurry, applied in layers of 6 to 12 mm thickness in one working cycle. Because it can be applied in a single coat, the use of Unimortar 1 as a waterproofing slurry can often offer considerable time advantages.



**'CAN OFFER CONSIDERABLE TIME ADVANTAGES'**

Trowel application of Vandex Unimortar 1

## Vandex Unimortar 2

Vandex Unimortar 2 is a waterproofing and repair mortar designed specifically for use on horizontal surfaces.

When used as a top coat on horizontal surfaces, Unimortar 2 is applied in layers of 8 to 10 mm in a single working cycle. Once cured, Unimortar 2 is resistant to abrasion and de-icing salt, and is capable of taking strong mechanical wear. For this reason it is often specified for use in car parks.



**'UNIMORTAR 2 IS RESISTANT TO ABRASION AND DE-ICING SALT'**



UVDB Registration No: 056147

## Vandex Super

Vandex Super provides an extremely economical and effective method for waterproofing concrete, above and below ground. Vandex Super is specifically designed for concrete waterproofing applications and is mixed with water prior to application by brush or spray. When Vandex Super is applied to a concrete surface, the active chemicals combine with the free lime and moisture present in the capillary tract to form insoluble crystalline complexes. These crystals block the capillaries and minor shrinkage cracks in the concrete to prevent any further water ingress (even under pressure). However the Vandex Super layer will still allow the passage of water vapour through the structure (i.e. the concrete will still be able to "breathe"). Because of its high coverage rate, Vandex Super is very economical in use.

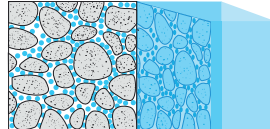
- **Basement waterproofing**
- **Car park waterproofing**
- **Waterproofing contiguous piling and diaphragm walls**
- **Waterproofing pile heads and pile caps**
- **Concrete slabs (floor, roof, balcony etc.)**
- **Construction joints**
- **Water-retaining structures**
- **Swimming pools**
- **Sewage treatment plants**
- **Channels**
- **Bridges**



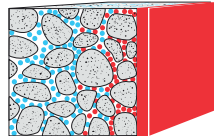
VANDEX Super applied as a slurry

### VANDEX IN-DEPTH WATERPROOFING FOR CONCRETE

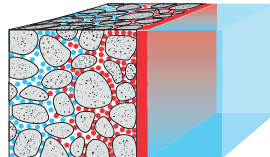
The capillary system of concrete is saturated with water 1



Vandex Super penetrates the concrete and blocks the capillaries 2



Permeation of water is no longer possible, water vapour is still allowed to pass 3



Alternative 'Dry Sprinkle' application for horizontal surfaces



1. VANDEX SUPER dry-sprinkled as powder immediately after initial setting of concrete.
2. Working the powder into the surface by machine or hand trowel.
3. Curing and protection for 5 days against evaporation by sun and wind.



## Construction and Movement Joints

Vandex produce a range of products specifically designed for waterproofing construction joints and movement joints. All are suitable for use above and below ground.



VANDEX Construction Joint Tape

### Vandex Construction Joint Tape

Vandex Construction Joint Tape is used to bridge and seal construction joints and cracks in concrete structures. It is used in conjunction with Vandex BB75 E flexible waterproofing slurry to provide an effective and durable seal. Vandex Construction Joint Tape can also be used in conjunction with Vandex Flexbit 2K P.



VANDEX Flextape

### Vandex Flextape

Vandex Flextape is a thermoplastic elastomer (TPE) sealing tape used to bridge and seal construction joints and movement joints in concrete structures. The bond to the substrate is achieved using Vandex Uniflex NV adhesive. Vandex Flextape is available in several widths to allow for differing degrees of movement.



VANDEX Expaseal

### Vandex Expaseal

Vandex Expaseal is an expanding waterstop used to waterproof construction joints or pipe inlets in concrete structures exposed to permanent or temporary hydrostatic water pressure (e.g. basements). When in contact with water Vandex Expaseal expands to form a positive seal against the concrete surrounding the construction joint which is resistant to water pressure.



UVDB Registration No: 056147

### Vandex Uniflex

Vandex Uniflex and Uniflex NV are silane-modified polymer adhesives and sealing compounds. In addition to a wide range of sealing applications, Uniflex is used as an adhesive for Vandex Expaseal B Plus expanding waterstop. Uniflex NV is used as an adhesive for Vandex Flextape.

**Adhesive and  
Sealing Compound**



### Vandex Mineralit

Vandex Mineralit is a surface-hardening agent for concrete and cementitious surfaces. It is supplied as a liquid for application by brush or low-pressure spray. Once applied, a physio-chemical process occurs, resulting in an improvement in the surface of cementitious building materials. Vandex Mineralit can be used prior to the application of Oldroyd cavity drainage membranes in concrete structures to reduce build-up of free lime.



**'SURFACE  
HARDENING AND  
LIME-CONTROL  
AGENT'**

### Vandex Plug

Water leaks and seepage are common problems in water-retaining structures and when building below ground. Fortunately, Vandex Plug offers a simple solution – supplied as a powder, Vandex Plug is mixed with water to form a thick paste. Once mixed, the paste is pressed into the leaking crack or hole using a trowel. After approximately 30 seconds, the Vandex Plug will have set and the leak will be sealed. The surface can then be levelled off using a levelling trowel.

Vandex Plug can be used internally or externally as a waterproof plugging mortar or where rapid setting and early strength gain is required.



**'SEALS WATER  
LEAKS IN 30  
SECONDS'**



## Dryzone® Damp-Resistant Plaster

Dryzone® Damp-Resistant Plaster is a modern, breathable, pre-gauged and CE marked plaster, developed to control dampness and salt migration in walls.

As a part of the Dryzone® System, Dryzone® Damp-Resistant Plaster was developed for the purpose of replastering after treatment for rising damp.

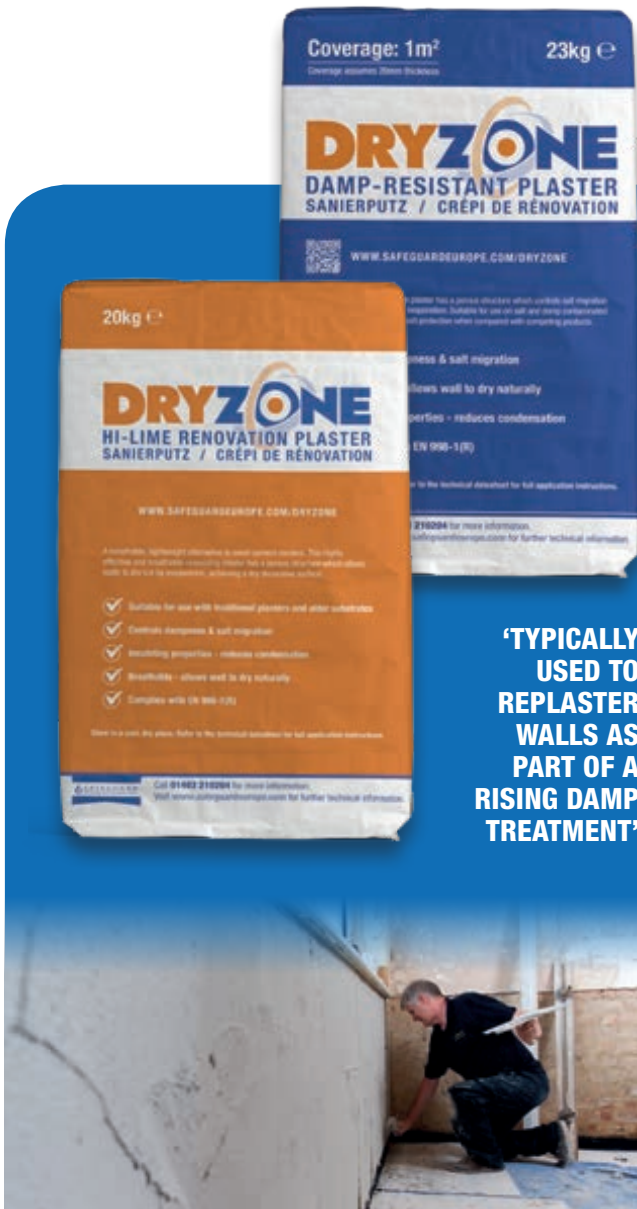
Its excellent damp and salt resistance also make it appropriate for use on walls that have been treated for penetrating damp.

## Dryzone® Hi-Lime Renovation Plaster

Dryzone® Hi-Lime Renovation Plaster is a breathable plaster blend containing natural hydraulic lime and calcite. This quick-drying variant of Dryzone® renovation plaster is suitable for use with traditional plasters and older substrates.

### Benefits

- Controls dampness and salt migration
- Breathable – allows walls to dry naturally
- Pre-gauged – simply add water and mix
- Creates warm decorating surface
- Ideal for flood remediation



**'TYPICALLY  
USED TO  
REPLASTER  
WALLS AS  
PART OF A  
RISING DAMP  
TREATMENT'**



**OLDROYD®**

Cavity drainage membranes

The Oldroyd range of Cavity Drainage Membranes are manufactured in Norway under an ISO9001 / 14001 quality and environmental management system. They are produced from high-strength polypropylene using a special, temperature-controlled manufacturing process.



This results in an exceptionally straight, tough membrane which does not suffer from the "banana-ing" and "rucking" which can cause problems when installing other cavity drainage membranes.

### Multi-layer Technology

All Oldroyd membranes are produced using Oldroyd's multi-layer technology technique which increases membrane strength and, in many cases, allows the use of 49 – 70% recycled plastic with no loss in performance.

Oldroyd cavity drainage membranes can be used for a wide range of waterproofing and civil engineering applications including:

- Green Roof Construction
- Damp-proofing Walls & Floors
- Waterproofing Concrete Slabs
- Tunnel/Arch Waterproofing
- Preventing Rain Penetration
- Basement Waterproofing
- Barn Conversions
- Radon & Ground Gas Mitigation



External Basement Waterproofing



## Oldroyd Xv Clear Cavity drainage membrane

Oldroyd Xv Clear is a semi-transparent, studded cavity drainage membrane manufactured from polypropylene. It is specifically designed for application to damp / contaminated internal floors and walls, and is particularly useful in basement waterproofing / conversion applications.

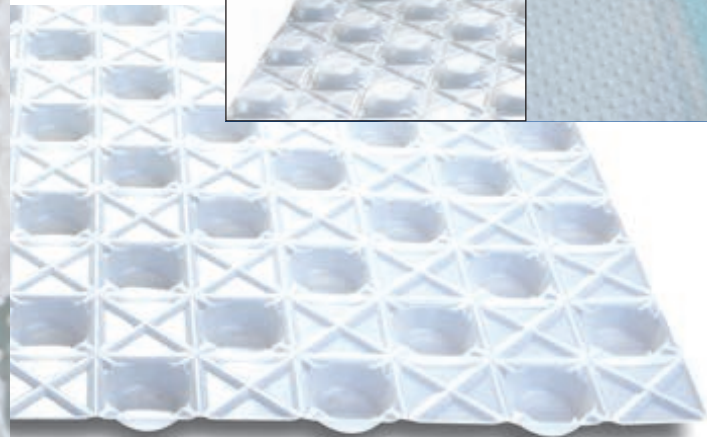


**'A POPULAR SOLUTION FOR BASEMENT WATERPROOFING'**

**ASK ABOUT OUR TRAINING COURSES – 01403 210204**

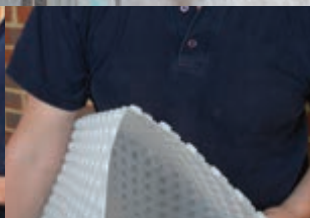


Basement Conversion



## Oldroyd Xv Black

Oldroyd Xv Black is the "green" alternative to Oldroyd Xv Clear – contains 56 – 70% recycled plastic with no loss of performance.



Cut required length and shape

Drill holes for Oldroyd Brick Plugs

Folds are made easily using Oldroyd Xv's unique 'X' pattern

Neat corners are formed easily

Joints are made by overlapping

Joints are sealed using Oldroyd Sealing Tape

Fastframe Drying System can now be installed

Finish with carpet and skirting board

**Orders and Technical Support – 01403 210204**



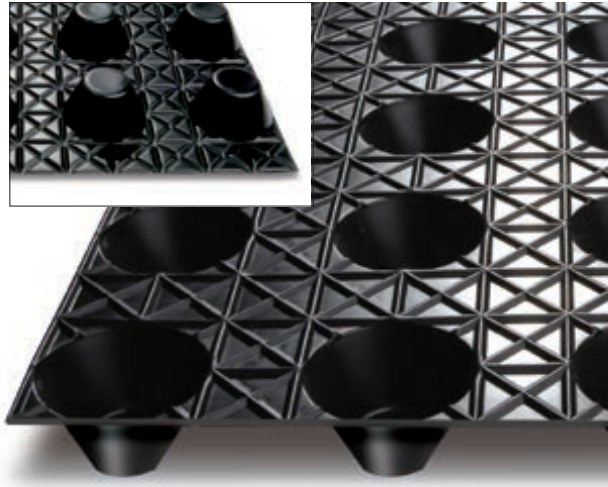
UVDB Registration No: 056147

**Product Information – [www.safeguardeurope.com](http://www.safeguardeurope.com)**



### Oldroyd Xv20

Oldroyd Xv20 benefits from large 20 mm studs providing greater drainage and flow capacity than standard Oldroyd Xv. For this reason Oldroyd Xv20 is ideally suited to civil-engineering applications and the waterproofing of large commercial basements.

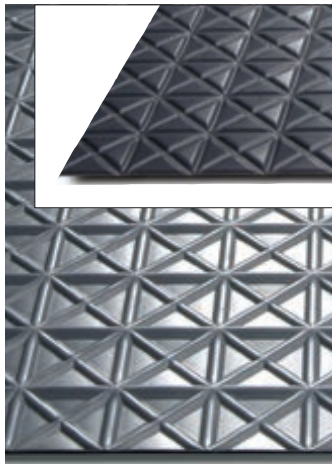


**'XV20 GREATER DRAINAGE AND FLOW CAPACITY'**

### Oldroyd Xs

Oldroyd Xs is a tough polypropylene membrane embossed with an "X" pattern of grooves. These grooves allow moisture to move behind the membrane and allow for shrinkage movement when screeds are laid on top.

Oldroyd Xs is typically laid on top of damp concrete floors or newly laid floor slabs (above ground). A wide choice of flooring types can then be laid on top, for example, screeds, particle board, and laminated wooden flooring. Insulation can also be used in conjunction with the system, where required.



**'MORE RESISTANT TO DAMAGE THAN STANDARD DPMS'**



Orders and Technical Support – 01403 210204

### Oldroyd Gtx Range

The Oldroyd Gtx range consists of cavity drainage membranes with a geotextile mesh welded to one side. The geotextile mesh filters out the 'fines' in the groundwater, preventing them from causing blockages in other areas of the drainage system.

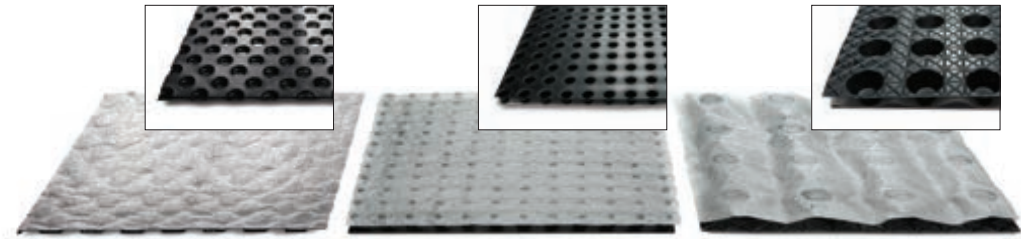
In external basement waterproofing applications, Oldroyd Gtx membranes are usually used as a secondary drainage layer to protect a primary waterproofing system. When used in this way, Oldroyd Gtx membranes are effectively used to replace protection boards, but with the added advantage of diverting the majority of groundwater away from the primary waterproofing system. This avoids the need for drainage aggregates and allows excavated soil to be reused as backfill.



Oldroyd Gtx is also suitable for use on horizontal surfaces (see page 39).



Oldroyd Gtx applied to external basement wall



Gtx

Gtx10 (high compressive strength)

Gtx20 (high flow rate)



UVDB Registration No: 056147

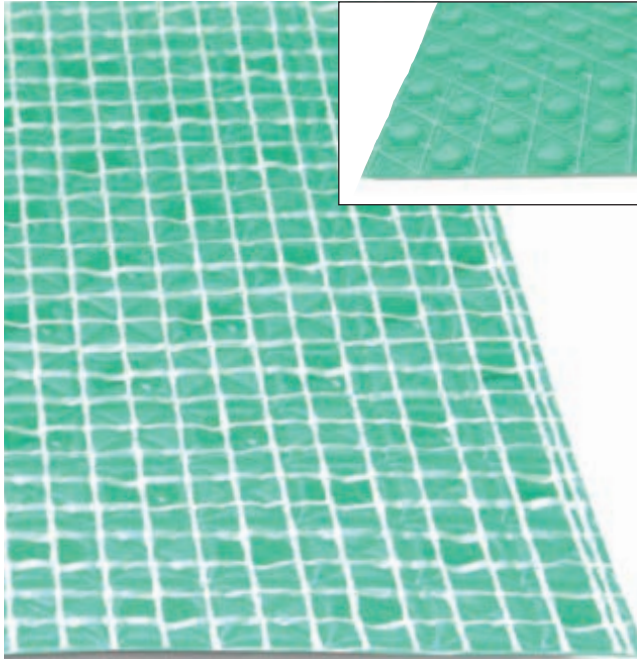
Product Information – [www.safeguardeurope.com](http://www.safeguardeurope.com)

## DAMP WALL REPLASTERING

### Oldroyd Xp

Oldroyd Xp Plaster Membrane is a studded polypropylene waterproofing membrane with a special mesh welded to one side. It is fixed to damp, contaminated walls using Oldroyd Plaster Plugs, with the studs facing the wall. This creates an air-gap which allows the wall to breathe whilst blocking the passage of moisture. On the reverse side of the membrane the special mesh can be plastered onto. This allows a dry plaster finish to be achieved without the risk of contamination from any damp or salts in the wall.

As an alternative to a plaster finish, plasterboard can be applied directly to Oldroyd Xp. The plasterboard is attached to the Oldroyd Xp by applying dabs of bonding compound to the heads of the Oldroyd Plaster Plugs that are used to attach the membrane to the wall.

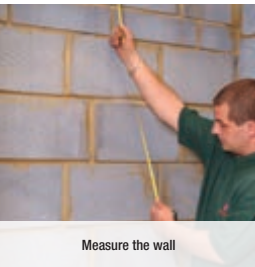


**COVER DAMP, CONTAMINATED WALLS INSTANTLY...  
... THEN APPLY A PLASTER FINISH.**

## DAMP WALL REPLASTERING



Oldroyd Xp is available in a Plaster Membrane Kit complete with sealing tape and fixings



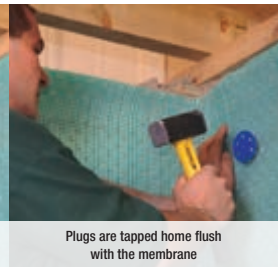
Measure the wall



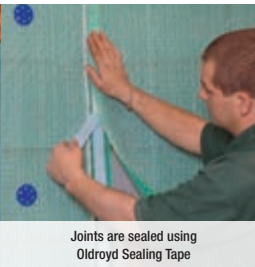
Cut required length



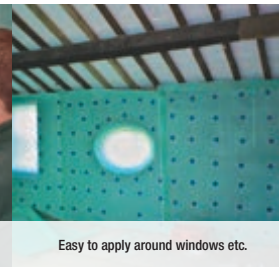
Drill holes for Oldroyd Plaster Plugs



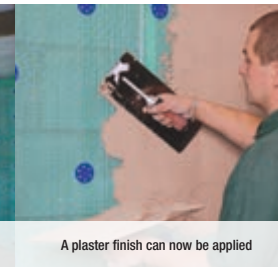
Plugs are tapped home flush with the membrane



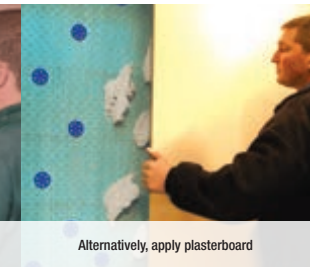
Joints are sealed using Oldroyd Sealing Tape



Easy to apply around windows etc.



A plaster finish can now be applied



Alternatively, apply plasterboard

Orders and Technical Support – 01403 210204



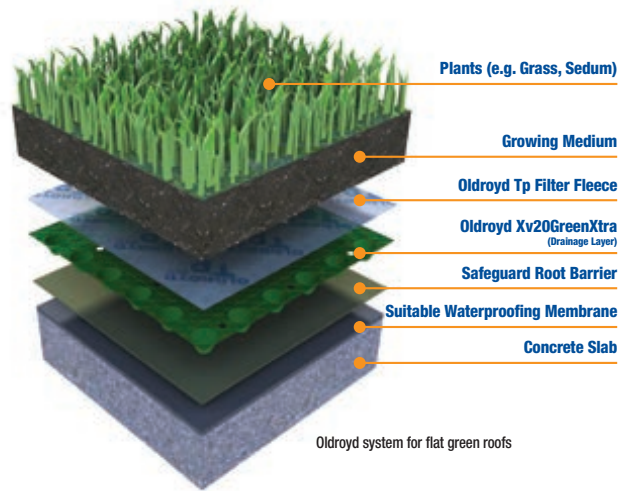
UVDB Registration No: 056147

Product Information – [www.safeguardeurope.com](http://www.safeguardeurope.com)

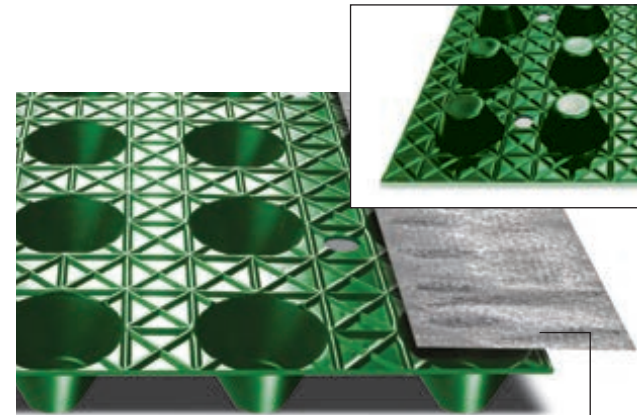
## Oldroyd Green Roof Membranes

Green roofs are only as green as the materials from which they are constructed. Oldroyd's multi-layer technology allows recycled material to be used in the inner core without the loss of performance normally associated with the use of recycled plastic in drainage membranes. The inner core consists of partly recycled plastic sandwiched between two outer layers of virgin material (see magnified cross-section opposite).

The membranes contain **between 49 and 70% recycled plastic.**



Oldroyd system for flat green roofs



Oldroyd Xv20 GreenXtra for flat green roofs

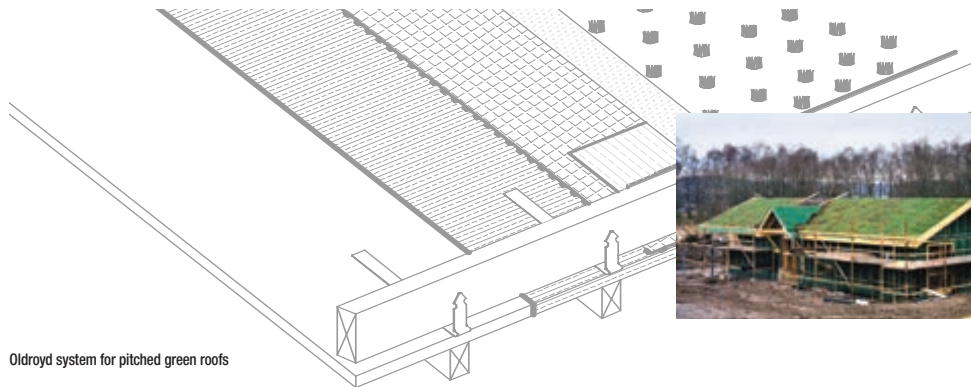
Oldroyd Tp Filter Fleece

**Oldroyd Xv Green** – Membrane with 6 mm stud. For pitched green roofs / turf roofs. Benefits from rubberised outer layer to reduce slip risk on pitched roofs.

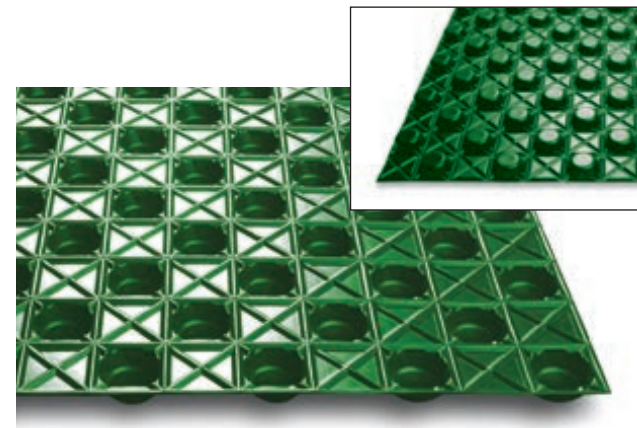
**Oldroyd Xv20 GreenXtra** – Perforated membrane with 20 mm stud. For flat green roofs. Used in conjunction with Oldroyd Tp filter fleece.

**Oldroyd Tp Filter Fleece** – Prevents particles of growing medium being washed into the Oldroyd Xv20 Green Xtra drainage layer.

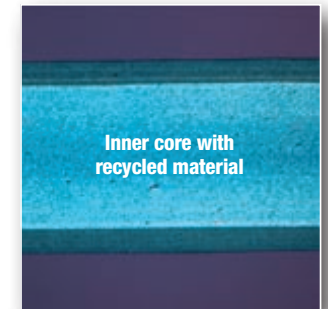
Below: Through a microscope, the quality of the technology employed in the manufacturing process can be clearly seen in this cross-section.



Oldroyd system for pitched green roofs



Oldroyd Xv Green for pitched green roofs



Inner core with recycled material



Orders and Technical Support – 01403 210204



UVDB Registration No: 056147

Product Information – [www.safeguardeurope.com](http://www.safeguardeurope.com)

## Drainage Solutions for Tunnels and Arches

Oldroyd cavity drainage membranes can be used in the construction of new tunnels and the refurbishment of existing tunnels.

### Newbuild Tunnels

Oldroyd membranes have a number of applications related to the construction of new tunnels.

- 1) To provide drainage for enabling works.
- 2) Can be applied to the outside of the tunnel structure to provide drainage (cut and cover tunnels).
- 3) Can be applied to the inside of the tunnel to direct any seepage to a suitable discharge point.

### Tunnel and Arch Refurbishment

Old tunnels and arches can suffer from dampness and water ingress because of a failure of the original waterproofing system, or, in the case of the many Victorian railway arches found in the UK, because they were never designed to be occupied.

Many Oldroyd cavity drainage membranes can be used to refurbish existing tunnels and arches. They are attached to the inside of the tunnel or arch using special fixing plugs and work by diverting any water ingress to a drainage point.

### New Fireproof Membrane

In most cases, tunnel waterproofing systems will be required to be fireproof.

For this reason, Oldroyd have developed a new fireproof drainage membrane specifically developed for tunnel applications – call our technical department for details.



Oldroyd membranes were used in this new build road tunnel, Surrey UK



Orders and Technical Support – 01403 210204

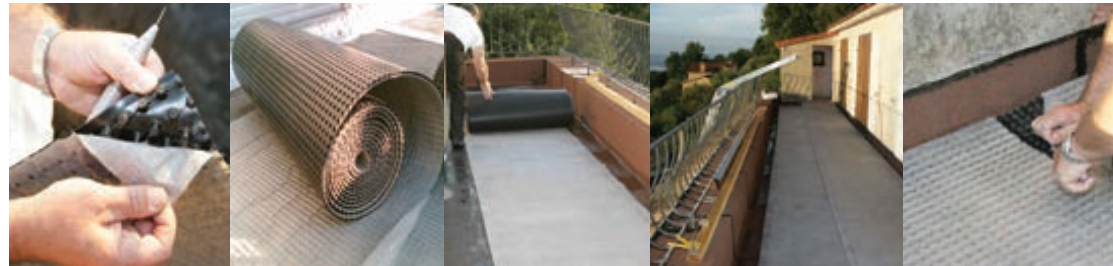
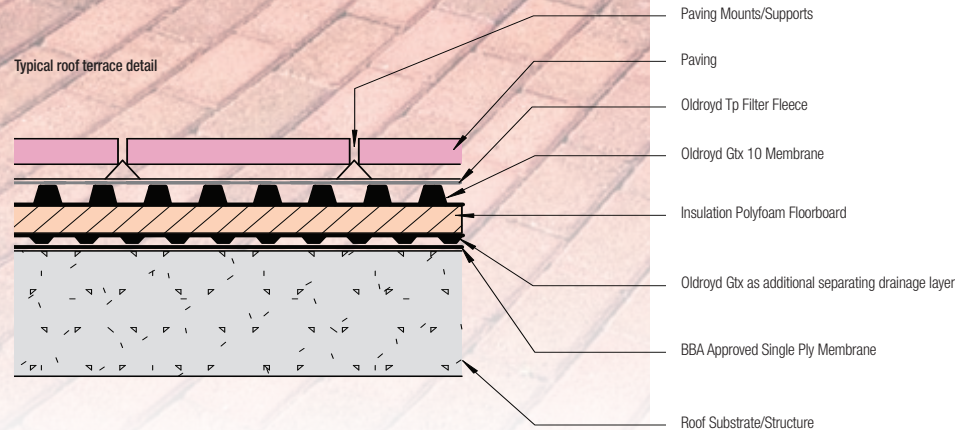
## Drainage Solutions for Horizontal Surfaces

Flat roofs and balconies can provide valuable usable space. However, any water as a result of rainfall or run-off must be conducted away from the surface and the waterproofing layer by a high performance drainage system.

The **Oldroyd Gtx** range of membranes (see page 33) provide an effective and easy to use solution.



Typical roof terrace detail



Oldroyd Gtx 10 used as part of a balcony waterproofing project



UVDB Registration No: 056147

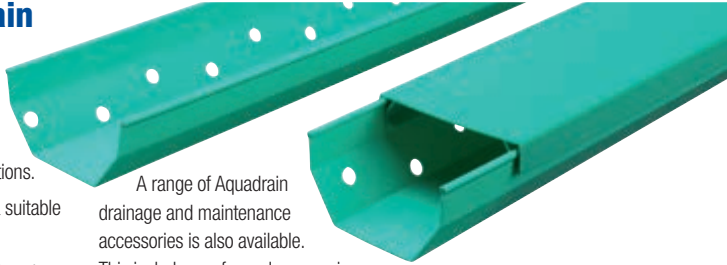
Product Information – [www.safeguardeurope.com](http://www.safeguardeurope.com)

## Oldroyd Aquadrain

Aquadrain is perimeter drainage channel designed to provide additional protection at the vulnerable wall-floor junction in basement waterproofing applications.

It is designed to direct water to a suitable drainage point or sump system.

Aquadrain is usually used in conjunction with Oldroyd cavity drainage membrane systems, (see pages 30 – 33). However, it can also be used to complement epoxy and cement-based waterproofing systems such as ECS Epoxy Floor Coating and Vandex BB75. Call our technical department for details.



A range of Aquadrain drainage and maintenance accessories is also available.

This includes preformed corner pieces and t-pieces that snap on to Aquadrain channels, and contain deflector plates to allow rodding poles and hoses to easily pass through them. Aquadrain jetting points and access panels are also available to allow easy access for maintenance, as required by BS 8102:2009.

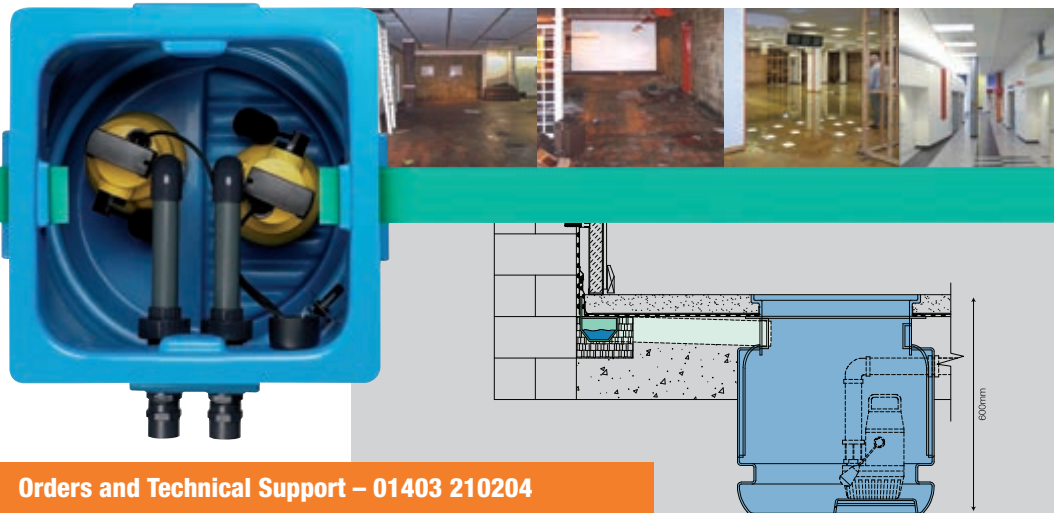
### 'PUMPS AND DRAINAGE CHANNELS FOR BASEMENT WATERPROOFING'



Aqua-drain jetting point



Aqua-drain corner piece



Orders and Technical Support – 01403 210204

## The Sentry™ Sump System

The Sentry Sump System has been designed to complement the Oldroyd Xv Clear studded membrane system and the Aquadrain perimeter drainage system when they are used to waterproof basements and underground structures. It was developed by Safeguard in conjunction with pumping solutions specialists, Edincare.

When it is known or anticipated that free water will be present behind the Oldroyd Xv membrane, the installation design should incorporate adequate provision for its disposal. This will normally require the installation of one or more sump pumps.

The Sentry Sump System comprises of three standard models, each contained within a tough, purpose designed 100-litre capacity sump chamber. The choice of model will be based on two major considerations:

- Anticipated water ingress
- Potential consequences of the basement flooding (risk vs cost)

### Sentry Single

Entry level system with single Ama-Drainer 303 sump pump and dual power alarm.

### Sentry Twin

Includes two Ama-Drainer 303 pumps and a dual power alarm. Designed for use in situations where a higher level of water ingress is anticipated or where additional backup is required. Dual outlet pipes allow both pumps to operate at full capacity.



Sentry Single

Sentry Twin

## High-Capacity Pumps

All Sentry Sump Systems utilise the same Ama-Drainer 303 high-capacity pumps. These can provide high pumping capacity even where water needs to be discharged several metres above pump level (a common requirement in basement situations). The pumps are built to high engineering standards and feature built-in non-return valves.



## AquaSafe Alarms

The Sentry Sump Systems come standard with the AquaSafe Alarm, which acts as an early warning to alert the end user if there is:

- A power failure to the AquaSafe Alarm
- A high level situation in the chamber
- A high level situation recorded
- A service due

There is a battery included within the AquaSafe Alarm to power itself in case of mains power failure.



## UPS 3000 Battery Back-Up System

The UPS 3000 Battery Back-Up System is an on-line double-conversion Uninterruptible Power Supply (UPS) offering the highest levels of resilience and protection. This provides power to one of the submersible pumps in case of a loss of mains power allowing for continued pump operation.



UVDB Registration No: 056147

Product Information – [www.safeguardeurope.com](http://www.safeguardeurope.com)

# Roxil

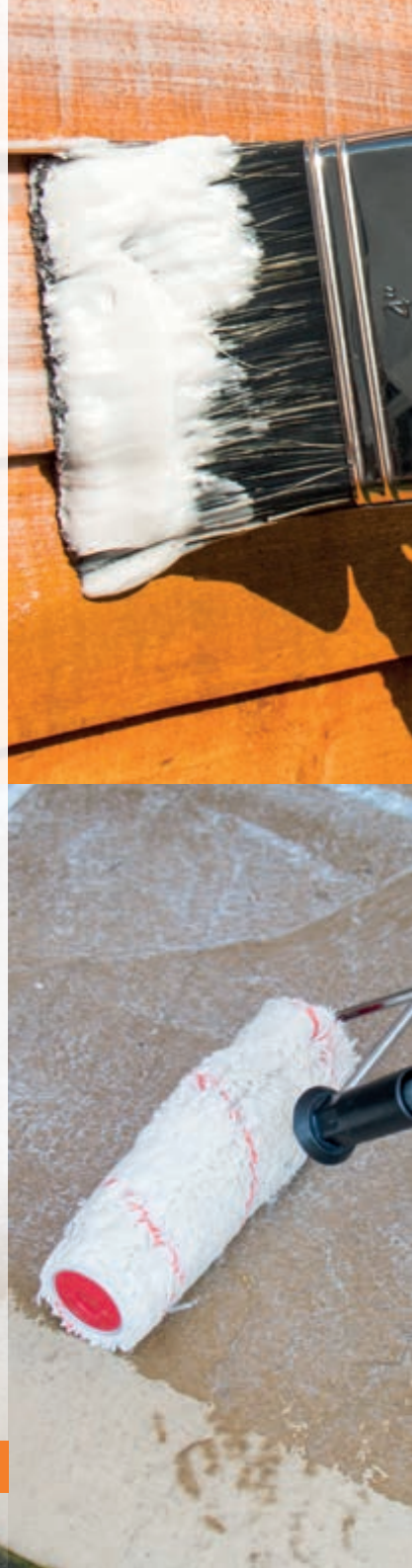
## Roxil® Landscaping Products

### Weatherproof patios, paving and wood for 10+ years with a single coat

Keeping garden patios, paving and outdoor wooden structures in good condition can be a challenge in the changeable UK climate. Rain, humidity and mould/algae growth can quickly cause them to look dirty and deteriorated. If patio / paving stones or wood are subjected to prolonged exposure to the elements without adequate protection they can be irreparably damaged.

The Roxil® range of products protects garden patios, paving and outdoor wooden structures from the elements. **Roxil® Patio Cream** and **Roxil® Wood Protection Cream** will weatherproof patios, paving and wood <sup>[1]</sup> for 10+ years <sup>[2]</sup> with a single coat. **Roxil® Wood & Patio Cleaner** enables effective and non-destructive cleaning of all Roxil®-treated materials.

For wooden structures that require extra protection, **Roxil® Wood Preserver** provides a deeply penetrating treatment for rot, fungal attack and woodworm infestation.



Orders and Technical Support – 01403 210204



### Roxil® Wood Protection Cream

**Roxil® Wood Protection Cream** is a silicone cream emulsion that weatherproofs the surface of timber <sup>[1]</sup> for 10+ years <sup>[2]</sup> with a single coat. The treatment does not change the appearance or texture of the wood that it is applied to, allowing it to retain its natural beauty. Roxil® treated wood is protected from the undesirable effects of moisture which can result in degraded appearances, mould / algae growth and structural warping.



### Roxil® Wood Preserver

**Roxil® Wood Preserver** is a deeply penetrating and powerful wood preservative for timber <sup>[1]</sup> that defends against rot, fungal attack and woodworm infestation. It is ideal for use as an undercoat before the use of Roxil® Wood Protection Cream.

<sup>[1]</sup> Vulnerable absorbent wood such as softwood timber and weathered hardwoods.

<sup>[2]</sup> Based on accelerated QUV aging and good maintenance. Regular maintenance of timber will improve the lifetime of the product.



### Roxil® Patio Cream

**Roxil® Patio Cream** is a silicone cream emulsion that weatherproofs the surface of patio and paving slabs for 10+ years <sup>[2]</sup> with a single coat. The treatment does not change the natural appearance or texture of the patio or paving surface. The unique formula deposits a 'locked-in' biocide that significantly reduces surface mould and algae growth. It also stops the growth of ingrained lichens, making it possible to use non-destructive soft cleaning methods.



### Roxil® Wood & Patio Cleaner

**Roxil® Wood & Patio Cleaner** is a liquid cleaner that loosens and helps clean away biological growth such as moss, algae and lichens. It is ideal for use on surfaces that have been treated with either Roxil® Wood Protection Cream or Roxil® Patio Cream. The effective and non-destructive formula can extend the life of patios, paved surfaces and wooden structures by reducing the need to use destructive pressure washers or acidic cleaners.

Product Information – [www.safeguardeurope.com](http://www.safeguardeurope.com)



- ✓ 10+ year weatherproofing <sup>(2)</sup>
- ✓ Single coat application
- ✓ Reduces mould and algae growth
- ✓ Reduces the effects of warping

## Roxil® Wood Protection Cream

**Roxil® Wood Protection Cream** is a silicone cream emulsion that waterproofs the surface of softwoods from the undesirable effects of moisture, which can result in degradation, warping and moss/algae growth. Once applied by brush or roller, the colourless cream formula will absorb into the wood. It will protect fences, decking, sheds, furniture and more from the elements without changing their appearance.

**Roxil® treated structures can expect a significantly extended life expectancy.**

### Roxil® Wood Protection Cream Application



1

#### Clean the surface

Ensure that the surface to be treated is dry and clear of debris. If it is affected by biological growth it is recommended to clean using Roxil® Wood & Patio Cleaner.



2

#### Application

Apply Roxil® Wood Protection Cream directly to the treatment area with a brush or roller, making sure to distribute it in an even and thin coat.



3

#### Absorption

Leave the cream to absorb into the wood for at least 24 hours, until it appears dry. This may take longer on cold days. See the technical datasheet for information.

### Retain Natural Appearance

Many available wood treatments dramatically alter the appearance of the surface that they are treating. They introduce a colour stain or create an unnatural texture.

**Roxil® Wood Protection Cream's** unique formula creates an invisible waterproof barrier. There is no change to the texture or appearance of the treated wood, ensuring that the natural beauty of the material is retained.



### Warping and Structural Instability

When wood takes on moisture, it expands. Structures that are constructed using wood can be vulnerable to the forces created by this expansion, leading them to become warped or broken.

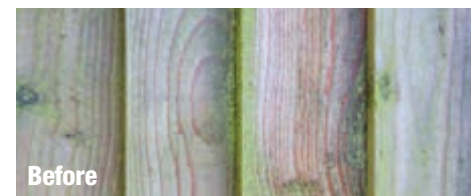
**Roxil® Wood Protection Cream's** powerful formula greatly reduces moisture ingress, minimising the expansion that causes wood to warp. This increased structural stability can extend the life of timber.



### Soft Washing for Longer Life

Ingrained dirt due to moisture ingress can make timber difficult to clean. Acidic cleaners are commonly used to clean dirty or moss/algae stained wood. They work by stripping the top layer of wood. The initial results of these cleaners can be satisfactory but they cause damage in the long term.

Roxil®-treated timber resists ingrained dirt and biological growth making acidic cleaners unnecessary. If cleaning is required, Roxil® Wood & Patio Cleaner is an effective and non-destructive way to return wood to its natural beauty.



Before



After

### Mould and Algae Growth

Exposure to adverse weather conditions can make the appearance of wood degrade and become dirty in a short space of time due to the effects of moisture. This effect is accelerated in areas subject to significant shade or a large amount of rain.

Mould and algae growth mainly occurs because the surface of the wood is damp. Repeated instances of mould & algae can permanently discolour wood.

**Roxil® Wood Protection Cream** penetrates into the surface of timber <sup>(1)</sup> and creates a waterproof barrier. This water repellent surface stops moisture ingress and significantly reduces mould and algae growth, keeping wood cleaner for longer.





- Reduces moss, lichen and algae growth
- Retains natural appearance of the surface
- Single coat application by brush or roller

## Roxil® Patio Cream

**Roxil® Patio Cream** is a silicone cream emulsion that weatherproofs patios and paved surfaces for 10+ years with a single coat. The powerful cream bonds with the patio or paving slab surface and deposits a 'locked-in' biocide that significantly reduces surface mould and algae growth.

The treatment does not change the natural appearance or texture of the patio or paving surface. It also stops the growth of ingrained lichens, making it possible to use non-destructive soft cleaning methods. As a result, a Roxil® treated patio will require less maintenance and will last longer than an untreated patio.

## Roxil® Patio Cream Application



1

### Clean the surface

Brush away any loose debris from the area to be treated. If cleaning is necessary, it is recommended to use Roxil® Wood & Patio Cleaner.



2

### Application

Apply small amounts of Roxil® Patio Cream directly to a section of the treatment area and distribute evenly using a brush or roller before repeating the process on the next section.



3

### Absorption

Allow the cream to absorb into the stonework / patio slabs for 24 hours until they appear dry. See the technical datasheet for more information.

FREE SAMPLE AVAILABLE



## Moss, lichen & Algae Growth

Most patios start to look tired and unclean because moss, lichen and black algae begins to grow. Deep-rooted lichens in particular can be very difficult to remove.

**Roxil® Patio Cream** penetrates into the patio or paving surface and forms a waterproof barrier whilst depositing a 'locked-in' biocide that dramatically reduces biological growth. Any surface growth that does occur is easily cleaned using Roxil® Wood & Patio Cleaner.



## Soft Washing for Longer Life

Porous patio and paving materials can become dirty very quickly due to ingrained dirt and biological growth. The stubborn nature of the ingrained dirt leads to the common use of pressure washers to clean patio and paving surfaces.

Pressure washing can cause significant damage to the surface of patio / paving slabs and can totally destroy the mortar joints between them. A Roxil® treated patio or paved surface resists ingrained dirt and biological growth meaning it can be cleaned with the effective and non-destructive Roxil® Wood & Patio



## Retain Natural Appearance

Traditional patio and paving preservers often dramatically alter the appearance of the surface that they are treating. Many competing products leave a sheen or 'wet-look' that can be undesirable.

**Roxil® Patio Cream's** unique formula creates an invisible waterproof barrier. There is no change to the texture or appearance of the treated patio/paving surface, ensuring that the natural beauty of the material is retained.







- Protects against mould, rot and fungal attack
- Eliminates woodworm
- Ready-for-use

## Roxil® Wood Preserver

**Roxil® Wood Preserver** is a liquid wood preservative that penetrates deeply into timber <sup>[1]</sup> and defends them against mould, rot, fungal attack and woodworm infestation.

The powerful formulation can be applied by brush, roller or spray and is designed specifically to work as an undercoat for Roxil® Wood Protection Cream for an unbeatable combined performance.

## Roxil® Wood Preserver Application



**Clean the surface**

Ensure that the surface to be treated is dry and clear of debris. If it is affected by biological growth it is recommended to clean using Roxil® Wood & Patio Cleaner.



**Application**

Apply Roxil® Wood Preserver directly to the treatment area with brush or spray. 2 – 3 coats may be required depending on the porosity of the substrate.



**Absorption**

Allow the coating to dry for at least 24 hours before over-coating with Roxil® Wood Protection Cream or weatherproof paint.

## Rot and Fungal Attack

Most buildings and structures that use wood as part of their construction are at risk from rot and fungal attack. These problems can severely reduce the structural integrity of a construction.

**Roxil® Wood Preserver's** deeply penetrating and powerful formula will not only prevent rot and fungal attack in wood but will also prevent further progress of existing cases.



## Woodworm Infestation

Woodworm infestations can be active long before any visible symptoms, such as exit holes, begin to show. The ideal place for woodworm to nest is warm and damp wood. The infestations can be extremely destructive.

**Roxil® Wood Preserver** penetrates into the wood and kills any woodworm larvae that are present. It will also prevent future infestations.



## Compatible with Roxil® Wood Protection Cream

**Roxil® Wood Preserver** is fully compatible for use before an application of Roxil® Wood Protection Cream. The combined performance of both products will give protection against mould/algae growth, warping, rain penetration, rot, fungal attack and woodworm infestation.

It is also possible to overcoat Roxil® Wood Preserver with a suitable weatherproof paint if a specific finish is required.



**FREE SAMPLE AVAILABLE**





- Kills and loosens biological growth on patios, paving and wood
- Non-destructive cleaning method
- Ready-for-use application with brush or sprayer



## Roxil® Wood & Patio Cleaner

**Roxil® Wood & Patio Cleaner** is a liquid-based cleaner for exterior surfaces such as decking, fencing, sheds, patios and paved surfaces. It is an effective non-destructive alternative to acid-cleaning or pressure washing for any exterior surface.

### Roxil® Wood & Patio Cleaner Application



**1 Apply Roxil®**  
Apply Roxil® Wood & Patio Cleaner to the area to be cleaned via spray or direct application. Leave for at least one hour. For best results, leave it to soak for 24 hours.



**2 Scrub**  
Scrub the area with a stiff brush, paying special attention to areas with the most biological growth.



**3 Rinse**  
Rinse the area with clean water, brush away any left-over debris and leave to dry naturally. If cleaning before the application of Roxil® Patio Cream or Roxil® Wood Protection Cream, leave to dry for at least 24 hours.

### Soft Washing for Long Life

The ready-to-use cleaning formula of **Roxil® Wood & Patio Cleaner** will remove mould, algae and dirt without causing any damage to the surface of the material that it is applied to. This non-destructive cleaning method is an ideal alternative to pressure washing and acidic cleaning on both patios/paved surfaces and wooden structures. Long term use of either pressure washer or acidic cleaners can cause significant damage to both patios and wooden structures.



### Compatible with Entire Roxil® Range

**Roxil® Wood & Patio Cleaner** has been formulated specifically to be effective on both patios/paved surfaces and wooden structures, including those that have been treated with Roxil® Patio Cream, Roxil® Wood Protection Cream or Roxil® Wood Preserver.



### Soluguard Ready For Use Range

Soluguard "Ready For Use" products are supplied ready-mixed – no dilution is necessary.

- No mixing necessary

### Soluguard Woodworm Treatment Ready For Use

HSE: 9321

High strength woodworm treatment supplied ready-for-use. Applied to affected timbers by brush or spray at a rate of 1 litre per 3 – 4 m<sup>2</sup>.

### Soluguard Woodworm & Rot Treatment Ready For Use

HSE: 9290

'Dual Purpose' timber treatment supplied ready-for-use. For application to timber for the treatment of woodworm and/or as part of a dry rot/wet rot treatment strategy.

**'SOLUGUARD PRODUCTS DO NOT CONTAIN ANY SOLVENTS – MEANING NO "SOLVENT SMELL" LINGERING IN TREATED PROPERTIES'**

All Soluguard timber treatments are approved by the HSE for sale in the UK.

**Use pesticides safely. Always read the label.**



#### Step by step application for Soluguard Ready For Use Treatments

-   
Remove handle from sprayer
-   
Pour Soluguard Ready For Use into sprayer
-   
Attach handle and shake the sprayer
-   
Pump sprayer and spray on to affected areas

### Soluguard Multi-Surface Biocide Ready For Use

HSE: 9517

A high-strength biocide for removing algae, fungi, moulds and moss growth. Suitable for use on brick, concrete, stone, render and plastic surfaces such as:

- Internal walls
- Indoor mould from condensation
- Paving and patios
- Ornamental monuments
- Driveways
- Roof tiles

Soluguard Multi-Surface Biocide can also be used prior to applying Stormdry® masonry protection cream to clear existing biological growth from masonry surfaces.

Supplied in a 5 litre pack which will treat 10 – 100 m<sup>2</sup>.



Pump sprayer and spray to wall



Before and after treatment with Multi-Surface Biocide

## Protimeter

### Mini Moisture Meter

The entry level Protimeter Mini is a "resistance type" moisture meter that is used for identifying damp problems in building materials. Its durable, rugged design and attention to detail make it the preferred choice among surveyors, damp treatment specialists, estate agents, and other building professionals.

The Protimeter Mini moisture meter is supplied with an extension pin probe and a calibration tool.

- Extension probe
- Calibration tool
- Carry pouch
- Batteries
- Instructions



### Surveymaster Moisture Meter

The Protimeter Surveymaster is an enhanced version of the Protimeter Mini. In addition to the pin-type "resistance" measurement provided by the Mini, the Surveymaster benefits from a non-destructive radio-frequency based "search mode". This allows measurements to be taken without damaging décor and also to be taken below the surface of the substrate.

The full list of included items is as follows:

- Extension probe
- Calibration tool
- Deep wall probes – 240mm
- Spare pins x2
- Instructions
- Batteries
- Carrying pouch



### Aquant

The Protimeter Aquant is a "non-destructive" moisture meter used to indicate the relative moisture level of non-conductive and porous materials – e.g. masonry, concrete, plaster, and fibreglass (GRP).

It detects moisture using a radio frequency transceiver rather than the more common pin type sensor such as that found on the Protimeter Mini. This allows it to detect damp below the surface – e.g. behind tiled walls or detecting dampness within GRP boat hulls.

The Aquant is able to detect dampness up to 19 mm below the surface depending on the physical characteristics of the material under test.

- Non-invasive measuring (no pin marks)
- Detects moisture below the surface
- Calibration tool
- Not adversely affected by surface moisture such as condensation



### Hygromaster

The Protimeter Hygromaster is a handheld hygrometer with the additional benefit of data-logging capability. The Protimeter Hygromaster can also function as a datalogger by setting it to record measurements and leaving it in place for a period of time. Optional software and a data cable (available separately) are required to use this feature.

This version of the Hygromaster comes with the most popular "Hygrostick" sensor. This is optimised for measuring humidity in the 30 – 100% rh range and may be used with Protimeter humidity sleeves that are used when measuring the equilibrium relative humidity of solid walls and floors.

- Hygrostick sensor (30 – 100 %rh)
- Velcro pouch with belt loop
- 2 x AA batteries
- Great for diagnosing condensation problems



## Stormdry® Masonry Absorption Test Kit

The Stormdry® Masonry Absorption Test Kit provides all the basic equipment required to test a masonry wall for absorbency and diagnosing rain penetration problems.

The test kit includes:

- Mastic adhesive or sealant for affixing Stormdry® Gauges to masonry surface
- 4 x Stormdry® Gauges (also known as Karsten tubes or Rilem tubes)
- Water bottle with nozzle
- Sample tube of Stormdry® Masonry Protection Cream
- Paintbrush for applying Stormdry® Masonry Protection Cream to test areas



VIDEO – Visit [www.stormdry.com](http://www.stormdry.com) to view more information on the Stormdry® Test Kit or call 01403 210204 to request a copy



## Stormdry® Gauge

The Stormdry® Gauge is designed to measure the rain penetration potential of masonry. Calculation of the pressures applied shows that when the tube is filled to the zero mark, the pressure equates to that applied by wind-driven rain with a wind-speed of 98 mph.



We know that obtaining the experience and knowledge required to use specialist damp-proofing and waterproofing products can be difficult. It is for this reason that Safeguard has put together the following range of presentations and training courses. They are run by some of the most experienced names in the industry, allowing you to get the maximum value out of our product ranges, whether you are specifying or applying them.

Most courses are run at our head office in Horsham, West Sussex, with excellent road and rail links from London, Gatwick Airport and the South Coast. Practical installation courses are also run in Huddersfield, West Yorkshire.

## CPD Seminars

Safeguard offers a comprehensive range of RIBA approved CPD seminars on the subjects of damp-proofing, waterproofing and green roofs. All seminars are presented by our qualified technical representatives, at the venue of your choosing in the UK. The available presentations are:

- **Waterproofing Basements & Underground Structures (Newbuild) – 1 hour**
- **Waterproofing Existing Basements – 1 hour**
- **Waterproofing Newbuild & Existing Basements – 2 hours**
- **Dealing With Dampness In Existing Properties (Above Ground) – 1 hour**
- **Rising Damp: Causes & Treatment – 1 hour**
- **Penetrating Damp: Causes & Treatment – 1 hour**

The seminars are free-of-charge and, as they are RIBA approved, carry double CPD points for any industry affiliated professionals. To book, call 01403 210204 or fill in the CPD enquiry form on [www.safeguardeurope.com](http://www.safeguardeurope.com).

## Dampness, Condensation & Mould in Buildings

This one day course focuses on the identification and diagnosis of different types of damp and their effects on buildings. The itinerary includes a practical session to assess and interpret gathered data using hygrometers and thermometers. The course is held by an independent consultant.

Price: £160 + VAT (Includes tea, coffee and lunch.)

Venue: Horsham, West Sussex



## Practical Installation Courses

Practical one day courses for the installation of waterproofing and damp-proofing systems. Lunch, tea and coffee are provided for all courses. Attendees will be issued with an information pack as well as a certificate of attendance.

### Damp-proofing Course:

Covers damp and damp-proofing. Includes correctly identifying damp problems and their causes, the types of damp, and repair and treatment methods. Hands-on practice using Dryzone® damp-proofing injection cream, Oldroyd XP plaster membrane and Stormdry® water-repellent masonry cream.

Price: £99.99 + VAT per attendee.

Venues: Horsham, West Sussex & Greater Manchester Construction Training, Rochdale.

### Basement Conversion Course:

The one day course covers how to convert an existing basement into habitable space in accordance with BS 8102. Types of waterproofing systems available and choosing the most suitable one is discussed, followed by the practical installation of Oldroyd cavity drainage membranes and Vandex tanking. Also covered are finishing options, environmental controls and relevant standards and regulations.

Price: £99.99 + VAT per attendee.

Venues: Horsham, West Sussex.



Call 01403 210204 or visit [www.safeguardeurope.com](http://www.safeguardeurope.com) for latest course dates



Visit [www.safeguardeurope.com/training-courses](http://www.safeguardeurope.com/training-courses) to book online





Find out more about our product range at  
[www.safeguardeurope.com](http://www.safeguardeurope.com)

- Product Applications
- CAD Details
- NBS Clauses
- Product Datasheets
- Application Guidelines
- Product Videos
- Case Studies



Safeguard Europe Ltd.,  
Redkirk Close,  
Horsham,  
West Sussex.  
United Kingdom.  
RH13 5QL

Telephone: 01403 210204

Fax: 01403 217529

Email: [info@safeguardeurope.com](mailto:info@safeguardeurope.com)

[www.safeguardeurope.com](http://www.safeguardeurope.com)

Safeguard Europe Limited makes no warranties or representations as to the accuracy of information displayed on this site. We strongly recommend that you contact us directly for further help and guidance on all aspects of our products and services. Product safety information is available on request. The information corresponds to our current knowledge on the subject. It is offered solely to provide possible suggestions for your own requirements. It is not intended, however, to substitute any testing you may need to conduct to determine for yourself the suitability of our products for your particular purposes. This information may be subject to revision as new knowledge and experience becomes available. Since we cannot anticipate all variations in actual end-use conditions, Safeguard Europe Limited makes no warranties and assumes no liability in connection with any use of this information. Nothing in this publication is to be considered as a licence to operate under or a recommendation to infringe any patent right.